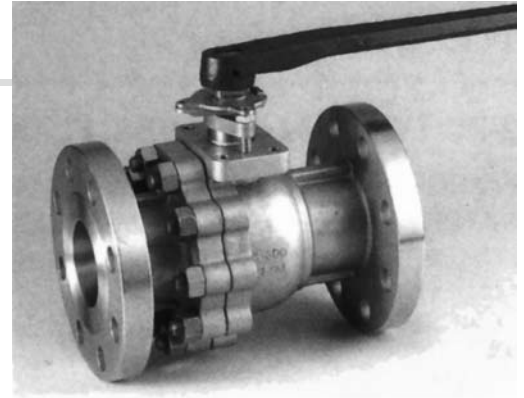


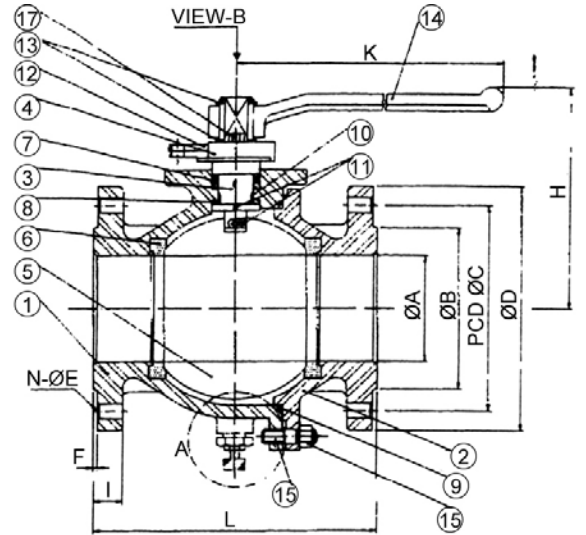
# KE-8123

## 2-PC TYPE BALL VALVES, FLANGED ENDS

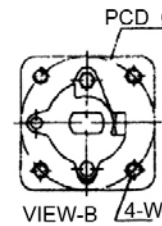
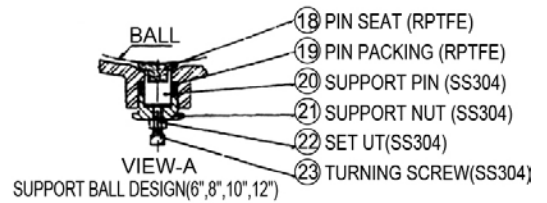
FLANGED ANSI 300LB, FULL PORT  
 MATERIAL: S.S. 316 & C.S. WCB  
 SIZE: 2-1/2" thru 12"



**FACE TO FACE DIMENSIONS : ANSI B16.10**  
**END FLANGE DIMENSION : ANSI B16.5**  
**WALL THICKNESS : ANSI B16.34**  
**CONFORM TO API 607 & API 598**  
 2-1/2"~4" : LEVER OPERATION (HANDLE /FCD)  
 6"~8" : OPTIONAL GEAR OPERATION OR PIPE GRIP (S15C)  
 10"~12" : STANDARD GEAR OPERATION



MATERIALS LIST				
ITEM	PART NAME	Q'TY	MATERIAL	
1	BODY	1	CF8M(SS316)	WCB(A216)
2	CAP	1	CF8M(SS316)	WCB(A216)
3	STEM	1	SS316	SS316 OR SS304
4	GLAND	1	SS304	STEEL
5	BALL	1	CF8M(SS316)	CF8(SS304)
6	SEAT	2	REINFORCED PTFE	
7	PACKING	3-4	RPTFE/GRAPHTE	
8	THRUST WASHER	1	RPTFE	
9	GASKET	1	SPRIAL WOUND WIRE (316/GRAPHITE)	
10	STEM BEARING	1	RPTFE	
11	ANTI-STATIC	2	SS304	
12	TRAVEL STOPPER	1	SS304	STEEL PLATED
13	SNAP RING	2	STEEL	
14	HANDLE	1	DUCTILE IRON (FCD)	
15	STUD	4-16	SS304	STEEL
16	NUT	4-16	SS304	STEEL
17	GLAND BOLT	2	SS304	STEEL



DIMENSIONS														Unit:mm	
SIZE	2-1/2"		3"		4"		6"		8"		10"		12"		
	mm	in	mm	in	mm	in	mm	in	mm	in	mm	in	mm	in	
A	65.0	2.50	80.0	3.00	100	4.00	150	6.00	200	8.00	250	10.0	300	12.0	
B	105	4.13	127	5.00	157	6.18	216	8.50	270	10.63	324	12.76	381	15.0	
C	149	5.87	168	6.61	200	7.87	270	10.63	330	12.99	387.5	15.26	451	17.76	
D	190	7.48	210	8.27	254	10.00	318	12.52	381	15.00	444	17.48	521	20.51	
E	22.0	0.88	22.0	0.88	22.0	0.88	22.0	0.88	25.0	1.00	29	1.14	32	1.26	
F	1.6	0.06	1.6	0.06	1.6	0.06	1.6	0.06	1.6	0.06	1.6	0.06	1.6	0.06	
T	25.4	1.00	28.6	1.13	31.8	1.25	36.6	1.44	41.3	1.63	47.7	1.88	50.8	2.00	
N	8	8	8	8	8	8	12	12	12	12	16	16	16	16	
H	153	6.02	162	6.38	191	7.52	267	10.50	340	13.38	GEAR OPERATION				
K	390	15.35	390	15.35	390	15.35	650	25.59	1400	55.12					
L	241	9.49	283	11.14	305	12.00	403	15.86	502	19.76	568	22.36	648	25.51	