

KE-8124

2-PC TYPE BALL VALVES, FLANGED ENDS

FLANGED DIN PN16/40(F1/F4)

MATERIAL: 1.4408 AND 1.0619

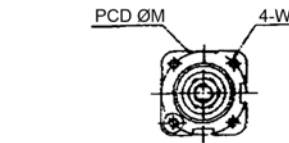
FULL PORT, INVESTMENT & SAND CASTING.

SIZE: 1/2" thru 4"



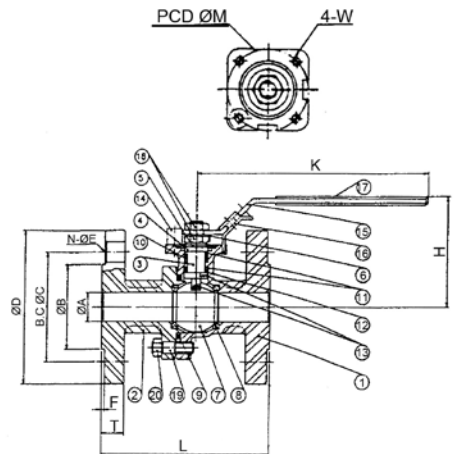
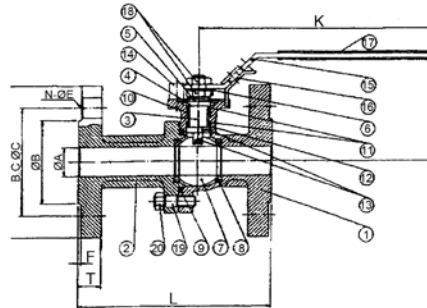
DIN PN16 TEST PRESSURE

1. WORKING PRESSURE:
16.35 KG/CM²
2. BALL SEAT TEST:
6.0 KG/CM² BY AIR
3. BODY TEST:
24.5 KG/CM² BY HYDROSTATIC



DIN PN40 TEST PRESSURE

1. WORKING PRESSURE:
40.8 KG/CM²
2. BALL SEAT TEST:
6.0 KG/CM² BY AIR
3. BODY TEST:
61.2 KG/CM² BY HYDROSTATIC



DIN-PN16/P40(F1) DIMENSIONS										
										Unit:mm
SIZE	DN15	DN20	DN25	DN32	DN40	DN50	DN65	DN80	DN100	DN100
NOMINAL	(PN16)	(PN16)	(PN16)	(PN16)	(PN16)	(PN16)	(PN40)	(PN40)	(PN40)	(PN16)
A	15	20	25	32	38	50	64	76	100	100
B	45	58	68	78	88	102	122	138	162	158
C	65	75	85	100	110	125	145	160	190	180
D	95	105	115	140	150	165	185	200	235	220
T (PN16)	14	16	16	16	16	18	18	20	20	20
T (PN40)	16	18	18	18	18	20	22	24	24	24
F	2	2	2	2	3	3	3	3	3	3
N	4	4	4	4	4	4	8	8	8	8
E	14	14	14	18	18	18	18	18	22	18
H	66	74	87	92	105	115	152.5	161.5	179	179
K	165	165	200	200	250	265	390	390	390	390
L (F1)	130	150	160	180	200	230	290	310	350	350
L (F4)	115	120	125	130	140	150	170	180	190	----
M	42	42	50	50	70	70	102	102	102	102

REMARKS : FACE TO FACE DIMENSION:DIN 3202F1
 FACE TO FACE DIMENSION:DIN 3202F4
 END FLANGE DIMENSION: PN16 DIN 2633
 END FLANGE DIMENSION: PN40 DIN 2635

MATERIALS LIST

NO.	PART NAME	Q'TY	MATERIAL	
			STAINLESS STEEL	CARBON STEEL
1	BODY	1	1.4408	1.0619
2	CAP	1	1.4408	1.0619
3	STEM	1	SS316	
4	SLEEVE	1	SS304	
5	DISC SPRING WASHER	2	SS301	
6	LOCK WASHER	1	SS304	
7	BALL	1	SS316	
8	SEAT	2	20% RPTFE	
9	GASKET	1	SPIRAL WOUND (316/GRAPHITE)	
10	PACKING	3-4	15% RPTFE WIRE	
11	PACKING/WASHER	2	50% RFTFE+50% 316	
12	THRUST WASHER	2	15% RFTFE	
13	ANTI-STATIC	2	SS304	
14	SET SLEEVE	1	SS304	
15	HANDLE	1	SS304	
16	LOCATING LOCK	1	SS304	
17	PLASTIC COVER	1	PLASTIC	
18	THIN NUT	2	SS304	
19	STUD	4	SS304	CARBON STEEL
20	NUT	4	SS304	CARBON STEEL