

KE-8124

2-PC TYPE BALL VALVES, FLANGED ENDS

FLANGED DIN PN16-F1/F4/F5

MATERIAL: 1.4408 AND 1.0619

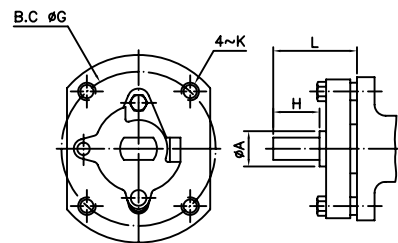
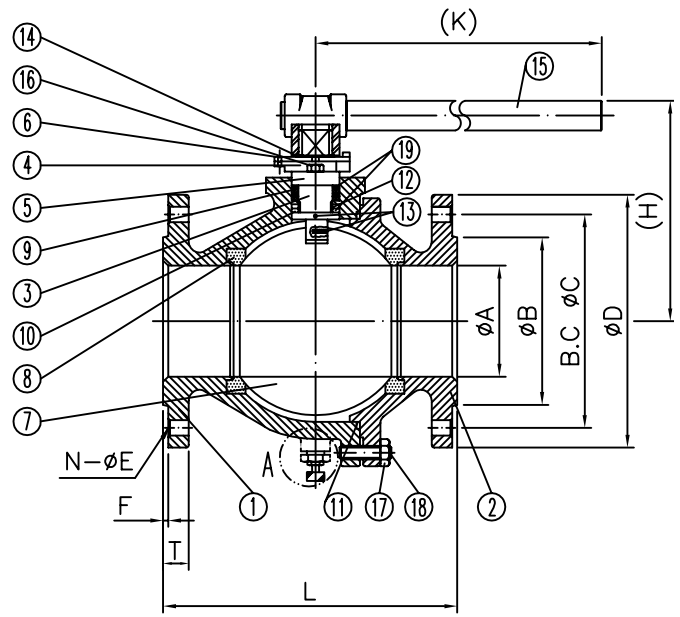
FULL PORT, INVESTMENT & SAND CASTING.

SIZE: 2-1/2" thru 12"

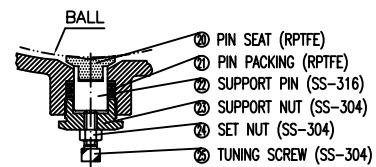


MATERIALS LIST				
No.	PART NAME	Q'TY	MATERIAL	
			CF8M/SS-316	CAST STEEL/WCB
1	BODY	1	1.4408	1.0619
2	CAP	1	1.4408	1.0619
3	STEM	1	SS-316	SS-316 OR SS-304
4	GLAND	1	SS-304	CARBON STEEL
5	SLEEVE	1	SS-304	CARBON STEEL
6	TRAVEL SUPPORT	1	SS-304	ZINC PLATED C.S.
7	BALL	1	CF8M	CF8
8	SEAT	2	REINFORCED PTFE(15%)	
9	STEM PACKING	2-3	PTFE OR GRAFOIL	
10	THRUST WASHER	1	RPTFE	
11	GASKET	1	SS-316 OR GRAPHITE	
12	STEM BEARING	1	RPTFE	
13	GROUNDING DEVICE	2	SS-304	
14	SNAP RING	2	STEEL	
15	HANDLE	1	DUCTILE IRON (FCD)	
16	GLAND BOLT	2	SS-304	STEEL
17	NUT	4-16	SS-304	CARBON STEEL
18	STUD	4-16	SS-304	CARBON STEEL
19	PACKING/WASHER	1	50% PTFE + 50% 316	

DIMENSIONS									Unit:mm
SIZE NOMINAL	DN65	DN80	DN100	DN125	DN150	DN200	DN250	DN300	
	(PN16)	(PN16)	(PN16)	(PN16)	(PN16)	(PN16)	(PN16)	(PN16)	
A	65	80	100	125	150	200	250	300	
B	122	138	158	188	212	268	320	378	
C	145	160	180	210	240	295	355	410	
D	185	200	220	250	285	340	405	460	
E	18	16	18	18	22	22	26	26	
F	3	3	3	3	3	3	3	4	
T	18	20	20	22	22	24	26	28	
N	4	8	8	8	8	12	12	12	
M	102	102	102	125	125	125	140	140	
H	154	160	194	225	274	302	GEAR OPERATION		
K	230	390	390	650	650	1400			
L(F1)	----	----	----	400	480	600	730	850	
L(F4)	170	180	190	----	----	----	----	----	
L(F5)	----	----	----	325	350	400	450	500	



PN16(DN125~DN300)



VIEW-A

SUPPORT BALL DESIGN (10"~12")

DIN PN16 TEST PRESSURE :

1. WORKING PRESSURE : 19.36 KG/CM²
2. BALL SEAT TEST : 6.0 KG/CM² BY AIR
3. BODY TEST : 31.7 KG/CM² BY HYDROSTATIC

END FLANGE DIMENSION: PN16 DIN 2633

FACE TO FACE DIMENSION: DIN 3202 F1/4/F5

REMARKS:

*2 1/2" ~ 4": LEVER OPERATION (HANDLE/FCD)

5" ~ 8" : OPTIONAL GEAR OPERATION OR PIPE GRIP (S15C)

10" ~ 12" : STANDARD GEAR OPERATION