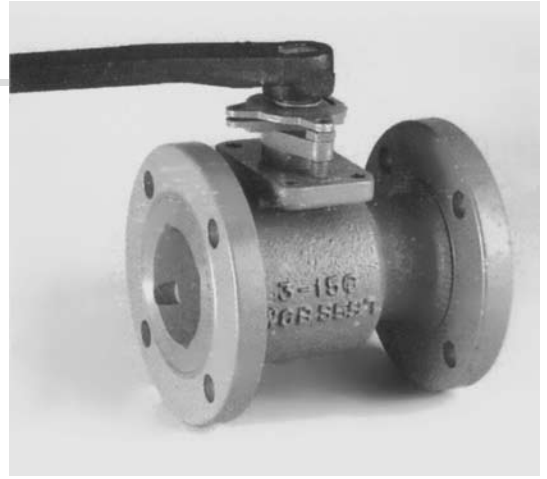


KE-8126

1-PC TYPE BALL VALVES, FLANGED ENDS

FLANGED ANSI 150
 MATERIAL: S.S. 316 & C.S. WCB
 REDUCED PORT, SAND CASTING
 SIZE: 2" THRU 12"

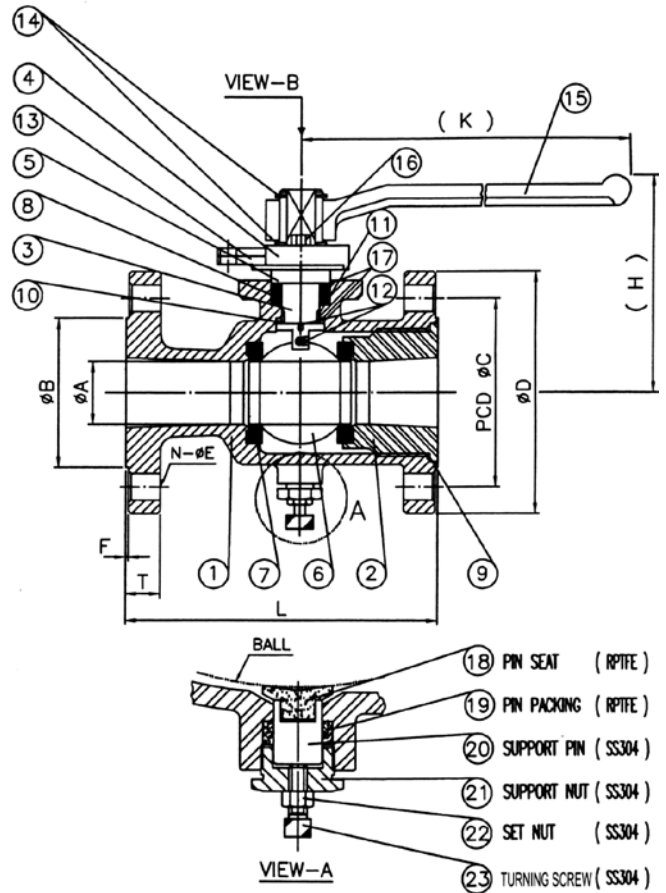


FACE TO FACE DIMENSIONS: ANSI B16.10
END FLANGE DIMENSIONS: ANSI B16.5
WALL THICKNESS: ANSI B16.34
 2"~6": LEVER OPERATION (HANDLE /FCD)
 8": OPTIONAL GEAR OPERATION OR PIPE GRIP (S150)
 10"~12": STANDARD GEAR OPERATION

- ANSI 150LBS TEST PRESSURE**
- WORKING PRESSURE : 275 PSI
 - BALL SEAT TEST : 80 PSI BY AIR
 - BODY TEST : 425 PSI BY HYDROSTATIC

MATERIALS LIST

ITEM	PART NAME	Q'TY	MATERIAL	
			CF8M/SS316	CAST STEEL/WCB
1	BODY	1	CF8M(SS316)	WCB (A216)
2	CAP	1	CF8M(SS316)	WCB (A216)
3	STEM	1	SS316	SS316 OR SS304
4	GLAND	1	SS304	STEEL
5	SLEEVE	1	SS304	STEEL
6	BALL	1	CF8M(SS316)	CF8(SS304)
7	SEAT	2	REINFORCED PTFE	
8	STEM PACKING	1-3	RPTFE	
9	JOINT GASKET	1	RPTFE	
10	THRUST WASHER	2	RPTFE/GRAPHITE	
11	STEM BEARING	1	RPTFE	
12	GROUNDING DEVICE	2	SS304	
13	THRUST STPOOER	1	SS304	STEEL PLATED
14	SNAP RING	2	STEEL	STEEL
15	HANDLE	1	DUCTILE IRON (FCD)	
16	GLAND BOLT	2	SS304	STEEL



DIMENSIONS

NOMINAL	2"		2-1/2"		3"		4"		6"		8"		10"		12"	
	mm	in	mm	in	mm	in	mm	in	mm	in	mm	in	mm	in	mm	in
	Unit:mm															
A	38	1.50	50	1.97	65	2.56	76	3.00	100	4.00	152	6.00	200	7.87	242	9.53
B	92	3.62	105	4.13	127	5.00	157	6.18	216	8.50	270	10.62	324	12.76	381	15.0
C	120.5	4.74	139.5	5.49	452.5	6.00	190.5	7.50	241.5	9.51	298.5	11.75	362	14.25	432	17.0
D	152	5.98	178	7.00	190	7.48	229	9.02	279	10.95	343	13.50	406	16.0	483	19.0
E	19	0.75	19	0.75	19	0.75	19	0.75	22	0.87	22	0.87	25	0.98	25	0.98
F	1.6	0.06	1.6	0.06	1.6	0.06	1.6	0.06	1.6	0.06	1.6	0.06	1.6	0.06	1.6	0.06
G	19.1	0.75	22.3	0.88	23.9	0.94	23.9	0.94	25.4	1.00	28.6	1.12	30.2	1.19	31.8	1.25
N	4	4	4	4	4	4	8	8	8	8	8	8	12	12	12	12
H	105	4.13	115	4.53	150	5.90	162	6.38	191	7.52	256	10.43	GEAR OPERATION			
K	265	10.43	265	10.43	390	15.35	390	15.35	390	15.35	650	25.59				
L	178	7.01	190	7.48	203	7.99	229	9.02	267	10.5	292	11.50				