

KE-8130 & KE-8130DM

1-PC WAFER TYPE BALL VALVES

WITH ISO 5211 MOUNTING PAD (KE-8130)

WITH ISO 5211 DIRECT ASSEMBLY TOP FLANGE(KE-8130DM)

MATERIAL: S.S. 316 & C.S. WCB.

FULL PORT, FLANGED DIN PN 16/40

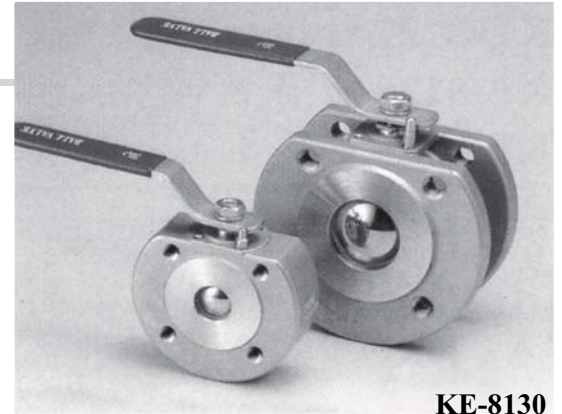
PN 16: DN 65 & DN 100 ~ DN 200

PN 40: DN 15 ~ DN 50 & DN 80

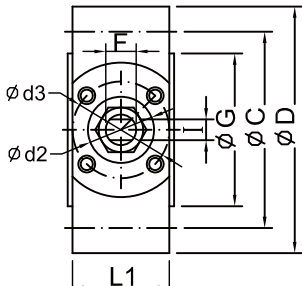
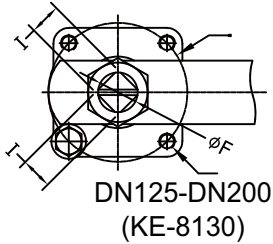
SIZE: DN 15 thru DN 200



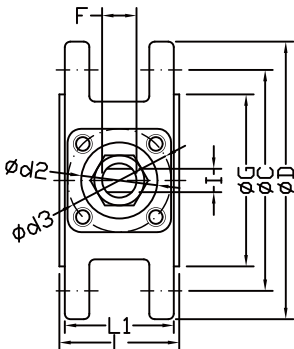
KE-8130DM



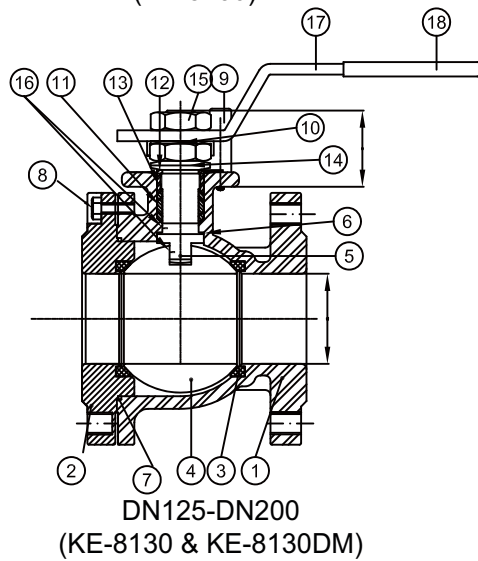
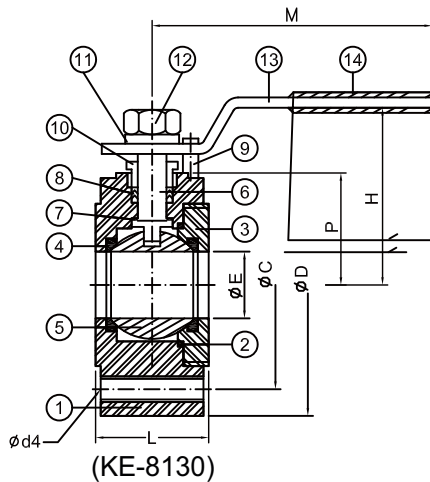
KE-8130



DN15-DN25
(KE-8130)



DN32-DN100
(KE-8130)



MATERIALS LIST			
DN15 ~ DN100			
No.	PART NAME	MATERIAL	
		316	WCB
1	BODY	1.4408	1.0619
2	GASKET	PTFE	
3	RING NUT	1.4408	1.0619
4	SEATS	PTFE	
5	BALL	1.4408	1.4308
6	STEM	1.4401	1.4301
7	STEM SEAL	PTFE	
8	STEM PACKING	PTFE	
9	STOPPER	1.4301	
10	GLAND NUT	1.4301	
11	SPRING WASHERS	1.4301	
12	NUT	1.4301	
13	HANDLE	1.4301	
14	PLASTIC COVER	PLASTIC	

MATERIALS LIST			
DN125 ~ DN200			
No.	PART NAME	MATERIAL	
		316	WCB
1	BODY	1.4408	1.0619
2	END CAP	1.4408	1.0619
3	SEATS	PTFE	
4	BALL	1.4408	1.4308
5	STEM	1.4401	1.4301
6	GASKET	PTFE & 50% SUS	
7	JOINT GASKET	PTFE	
8	BOLTS	1.4301	
9	STOPPER	1.4301	
10	LOCK WASHER	1.4301	
11	SEAL	PTFE	
12	GLAND BUSH	PTFE	
13	PACKING GLAND	1.4301	
14	BELLEVILLE	1.4301	
15	LEVER NUT	1.4301	
16	GROUNDING DEVICE	1.4401	
17	HANDLE	1.4301	
18	PLASTIC COVER	PVC	

KE-8130															DIMENSIONS			Unit: mm		
SIZE	DN	ISO-5211	C	D	ϕ d2	ϕ d3	ϕ d4	ϕ E	F	ϕ G	H	I	L	L1	M	P				
1/2"	15	F03	65	95	25	36	M12	15	8	48	63	5	35	31	105	32				
3/4"	20	F03	75	105	25	36	M12	20	8	58	66	5	38	34	105	35				
1"	25	F04	85	115	30	42	M12	25	11.2	68	76	8	42	38	158	39				
1-1/4"	32	F04	100	140	30	42	M16	32	11.2	78	85	8	50	46	158	50				
1-1/2"	40	F05	110	150	35	50	M16	38	12.7	88	110	9	60	54	183	54				
2"	50	F05	125	165	35	50	M16	50	12.7	102	118	9	80	64	183	63				
2-1/2"	65	F07	145	185	55	70	M16	65	20	122	131	12	94	88	243	79				
3"	80	F07	160	200	55	70	M16	80	20	138	152	12	118	112	243	87				
4"	100	F10	180	220	70	102	M16	100	24	158	182	18	140	134	328	108				
5"	125	F10	210	250	70	98.2	M16	125	28	188	220	22	200	194	328	169				
6"	150	F12	240	285	70	120	M20	150	36	212	273	27	240	234	400	208				
8"	200	F12	295	340	70	120	M20	200	36	268	303	27	310	304	500	238				