

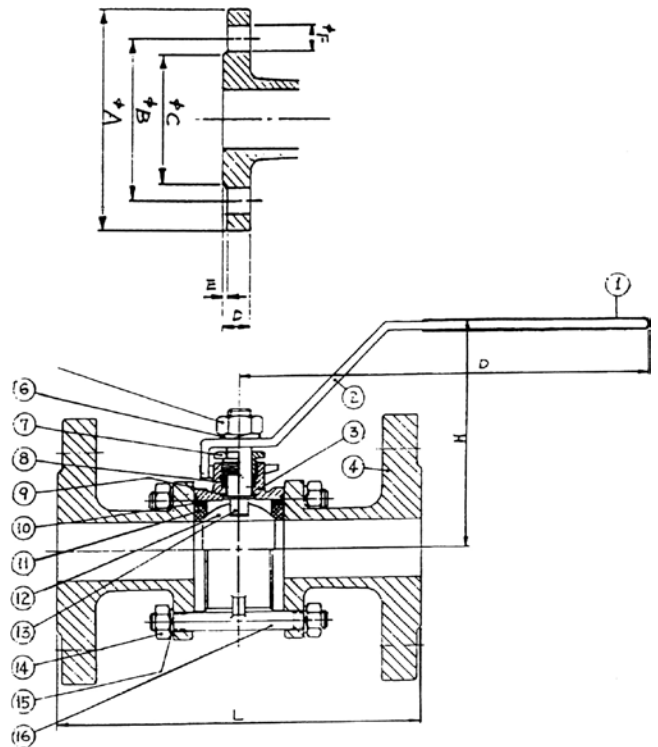
KE-8131

3-PC TYPE BALL VALVES, FLANGED ENDS

FLANGED ANSI 150LB, PN16/40-F1
 MATERIAL: S.S. 316 & C.S. WCB
 INVESTMENT CASTING, FULL PORT.
 SIZE: 1/2" THRU 4"



DIMENSIONS									Unit:mm
PN16									
SIZE DN	φ A	φ B	φ C	D	E	φ F	Bolt		
							Number	Piam.	
15	95	65	45	14	2	14	4	M12	
20	105	75	58	16	2	14	4	M12	
25	115	85	68	16	2	14	4	M12	
32	140	100	78	16	2	18	4	M16	
40	150	110	88	16	3	18	4	M16	
50	165	125	102	18	3	18	4	M16	
65	185	145	122	18	3	18	4	M16	
80	200	160	138	20	3	18	8	M16	
100	220	180	158	20	3	18	8	M16	
PN40									
15	95	65	45	16	2	14	4	M12	
20	105	75	58	18	2	14	4	M12	
25	115	85	68	18	2	14	4	M12	
32	140	100	78	18	2	18	4	M16	
40	150	110	88	18	3	18	4	M16	
50	165	125	102	20	3	18	4	M16	
65	185	145	122	22	3	18	8	M16	
80	200	160	138	24	3	18	8	M16	
100	235	190	162	24	3	22	8	M20	



MATERIALS LIST			
No.	PART NAME	Q'TY	MATERIAL
1	PLASTIC COVER	1	PVC
2	HANDLE	1	SUS 304
3	BODY	1	316/304
4	CAP	2	316/304
5	STEM NUT	1	SUS 304
6	SPRING WASHER	1	SUS 304
7	GLAND NUT	1	SUS 304
8	STEM PACKING	1S	PTFE
9	THRUST WASHER	1	PTFE
10	PACKING	2	PTFE
11	BALL SEAT	2	15% G.F
12	BALL	1	316/304
13	STEM	1	SUS 316
14	BOLT NUT	8:12	SUS 304
15	BOLT WASHER	8:12	SUS 304
16	BOLT	4:6	SUS 304

ANSI 150LB DIMENSIONS						Unit:mm			
SIZE		A	L	H	D				
mm	inch	mm	mm	mm	mm				
15	1/2	16	108	74.5	110				
20	3/4	20	117	79.0	125				
25	1	24.5	127	84.0	145				
32	1 1/4	32	140	89.6	145				
40	1 1/2	38	165	96.7	175				
50	2	50	178	106	175				
PN16 & PN40 -F1									
SIZE	15	20	25	32	40	50	65	80	100
	1/2"	3/4"	1"	1 1/4"	1 1/2"	2"	2 1/2"	3"	4"
L	130	150	160	180	200	230	290	310	350
H	152	152	176	176	207	207	285	285	291
D	87	91	99	104	127	136	167	176	173