

# KE-8132

## 3-PC BALL VALVES, FLANGED ENDS,

FLANGED ASME 600/ 900

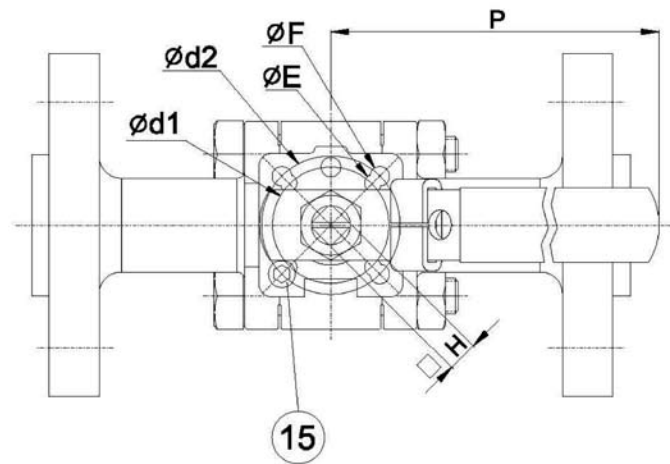
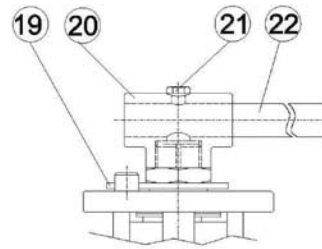
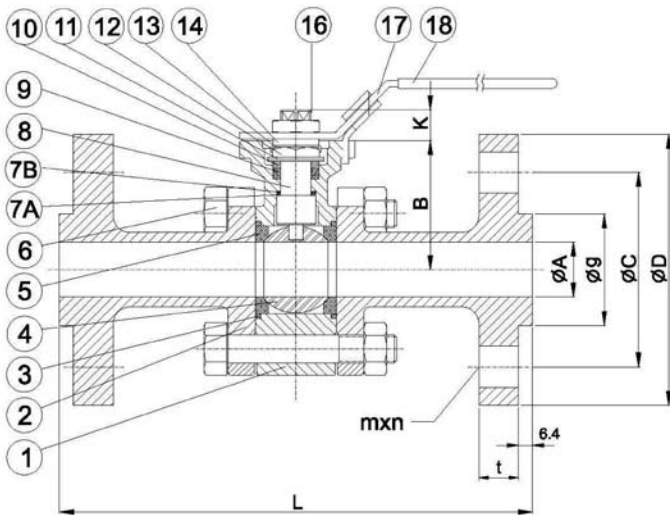
MATERIAL: CF8M

WITH ISO 5211 DIRECT ASSEMBLY TOP FLANGE

INVESTMENT CASTING, FULL PORT

BLOW-OUT PROOF STEM

SIZE: 1/2" thru 2"



MATERIAL LIST		
No.	PART NAME	MATERIAL
1	BODY	CF8M
2	FLANG CAP	CF8M
3	GASKET	TFM
4	BALL	SS 304
5	BALL SEATS	TFM
6	BOLTS	PEEK
7A	THRUST WASHER	SS 316
7B	THRUST WASHER	TFM
8	STEM	SS 304
9	STEM PACKING	SS 301
10	GLAND WASHER	SS 304
11	DISK WASHER	SS 304
12	GLAND NUT	SS 304
13	NUT STOP	SS 304
14	SPACE WASHER	SS 304
15	STOP PIN	SS 304
16	HANDLE NUT	SS 304
17	HANDLE	SS 304
18	HANDLE COVER	PLASTIC
19	PLATER	SS 304
20	LEVER HEAD	SS 304
21	BOLTS	SS 304
22	LEVER	STEEL PIPE

DIMENSIONS ASME600 (1/2" to 2")																
																Unit: mm
SIZE	A	B	K	d1	d2	E	F	H	P	L	g	C	D	t	m	n
1/2"	15	48	9.5	36	42	6.0	6.0	9	130	165	35	66.7	95	14.3	15.9	4
3/4"	20	53	12	42	50	6.0	6.0	11	155	190	43	82.6	115	15.9	19.1	4
1"	25	59	12	42	50	6.0	7.0	11	155	216	51	88.9	125	17.5	19.1	4
1-1/4"	32	62	16	50	70	7.0	9.2	14	205	229	64	98.4	135	20.7	19.1	4
1-1/2"	38	70	16	50	70	7.0	9.2	14	205	241	73	114.3	155	22.3	22.3	4
2"	50	90	19	70	102	9.2	11.4	17	300	292	93	127.0	165	25.4	19.1	8

DIMENSIONS ASME900 (1/2" to 2")																
																Unit: mm
SIZE	A	B	K	d1	d2	E	F	H	P	L	g	C	D	t	m	n
1/2"	15	48	9.5	36	42	6.0	6.0	9	130	216	35	82.6	120	22.3	22.2	4
3/4"	20	53	12	42	50	6.0	6.0	11	155	229	43	88.9	130	25.4	22.2	4
1"	25	59	12	42	50	6.0	7.0	11	155	254	51	101.6	150	28.6	25.4	4
1-1/4"	32	62	16	50	70	7.0	9.2	14	205	279	64	111.1	160	28.6	25.4	4
1-1/2"	38	70	16	50	70	7.0	9.2	14	205	305	73	123.8	180	31.8	28.6	4
2"	50	90	19	70	102	9.2	11.4	17	300	368	93	165.1	215	38.1	25.4	8