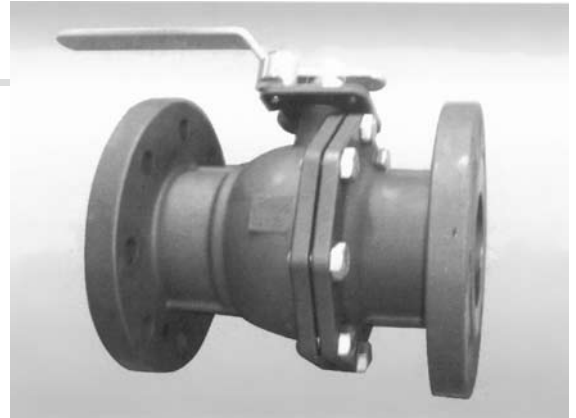


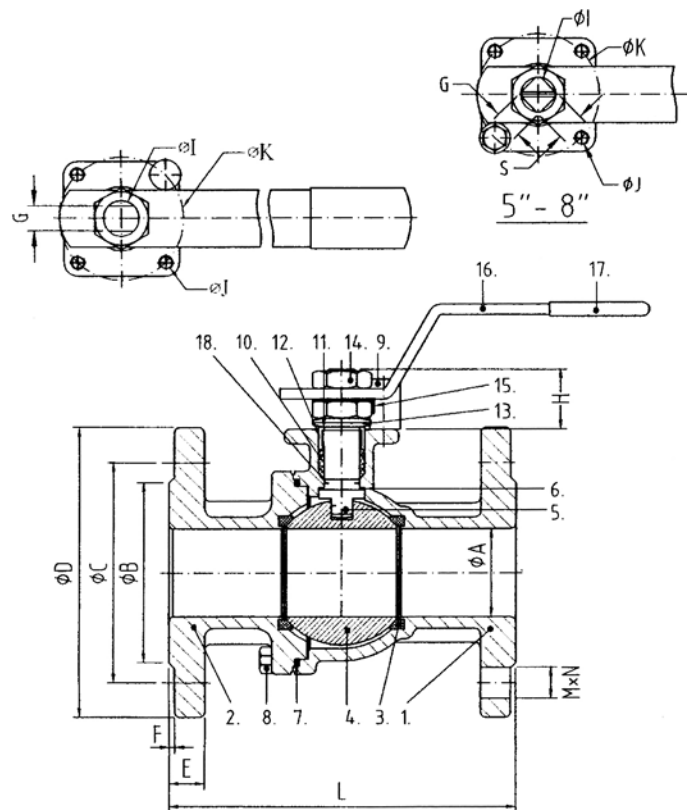
KE-8133

2-PC TYPE BALL VALVES, FLANGED ENDS

FLANGES ACCORDING TO ANSI B16.5, CLASS 300
 FULL PORT, INVESTMENT CASTING
 MATERIAL: CF8M & C.S. WCB
 SIZE: 1/2" thru 8"



MATERIALS LIST			
ITEM	PART NAME	MATERIAL	
		CF8M	WCB
1	BODY	CF8M	WCB
2	END CAP	CF8M	WCB
3	SEATS	PTFE	PTFE
4	BALL	CF8M	CF8M
5	STEM	SUS 316	SUS 316
6	GASKET	PTFE & 50%SUS	
7	JOINT GASKET	PTFE	PTFE
8	BOLTS	SUS 304	SUS 304
9	STOPPER	SUS 304	SUS 304
10	STEM PACKING	PTFE	PTFE
11	GLAND BUSH	PTFE	PTFE
12	PACKING GLAND	SUS 304	SUS 304
13	SPRING WASHER	SUS 304	SUS 304
14	LEVER NUT	SUS 304	SUS 304
15	LOCK WASHER	SUS 304	SUS 304
16	HANDLE	SUS 304	SUS 304
17	PLASTIC COVER	PVC	PVC
18	GROUNDING DEVICE	316	316



DIMENSIONS																	Unit:mm
ANSI 300LB BODY								FLANGE								DIN ISO 5211	
DN	B	C	D	E	F	M	N	DN	A	G	H	I	S	J	K		L
15	35	66.5	95	14.3	1.6	4	16	1/2"	16	9	24	12.7	-	M6	50	140	F05
20	43	82.5	117	15.9	1.6	4	19	3/4"	20	9	24	12.7	-	M6	50	152	F05
25	51	88.9	124	17.5	1.6	4	19	1"	25	10	25	16	-	M6	50	165	F05
32	64	98.5	133	19.1	1.6	4	19	1-1/4"	32	10	25	16	-	M6	50	178	F05
40	73	114.5	156	20.7	1.6	4	22	1-1/2"	38	14	33	20	-	M8	70	190	F07
50	92	127	165	22.3	1.6	4	19	2"	50	14	33	20	-	M8	70	216	F07
65	105	149	190	25.4	1.6	8	22	2-1/2"	65	14	33	20	-	M8	70	241	F07
80	127	168	210	28.6	1.6	8	22	3"	80	18	41	24	-	M10	102	283	F10
100	157	200	254	31.8	1.6	8	22	4"	100	18	41	24	-	M10	102	305	F10
125	186	235	279	35	1.6	8	22	5"	125	22	41	28	22	M10	102	381	F12
150	216	270	318	36.6	1.6	12	22	6"	150	27	50	36	27	M12	125	403	F12
200	270	330	381	41.3	1.6	12	25	8"	200	27	50	36	27	M12	125	502	F12