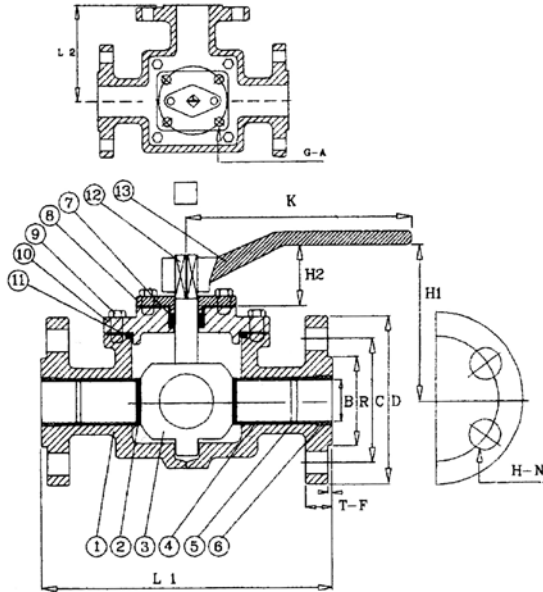
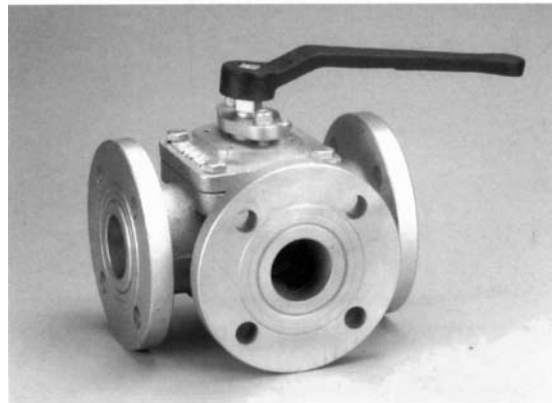
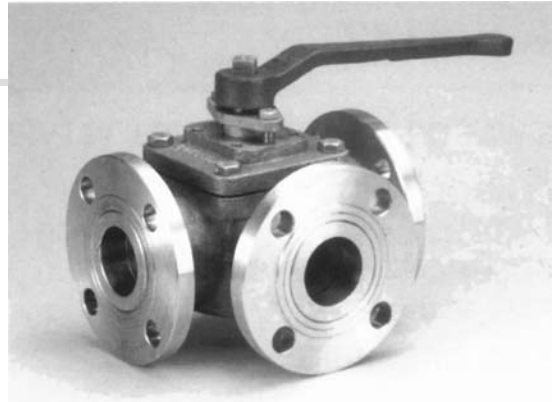


# KE-8141

## 3-WAY TYPE BALL VALVES, FLANGED ENDS

FLANGED ANSI 150LB, JIS 10K AND DIN PN-16  
 MATERIAL: C.I. FC-20, C.S. WCB AND CF8/CF8M  
 SAND CASTING AND INVESTMENT CASTING  
 SIZE: 1" thru 6"



### MATERIALS LIST

NO.	PART NAME	MATERIAL			
		CAST IRON	C.S. WCB	ASTMA351 CF8	ASTMA351 CF8M
1	BODY	CAST IRON	C.S. WCB	ASTMA351 CF8	ASTMA351 CF8M
2	BALL SEAT	TEFLON	TEFLON	TEFLON	TEFLON
3	BALL WITH STEM	CF8	CF8	CF8	CF8
4	SEAT RING HOLDER	CAST IRON	CAST IRON	CF8	CF8
5	O-RING	NBR	NBR	NBR	NBR
6	RETAINER	CAST IRON	CAST IRON	CF8	CF8M
7	STEM PACKING	TEFLON	TEFLON	TEFLON	TEFLON
8	GLAND FLANGE	CAST IRON	CAST IRON	CF8	CF8M
9	GLAND BOLT	SS41	SS41	SUS304	SUS 304
10	TOP COVER	CAST IRON	CAST IRON	CF8	CF8M
11	JOINT GASKET	TEFLON	TEFLON	TEFLON	TEFLON
12	STEM	CF8	CF8	CF8	CF8M
13	HANDLE	CAST IRON	CAST IRON	CAST IRON	CAST IRON

POSITION	A	B	C	D
L PORT				
T PORT				

### DIMENSIONS

Unit:mm

VALVE SIZE		L1	L2	B	D			T			R			F	C			H			N	H1	H2	K	□	A	G
mm	inch				JIS-10K	ANSI-150LB	PN16 DIN-3202	JIS-10K	ANSI-150LB	PN16 DIN-3202	JIS-10K	ANSI-150LB	PN16 DIN-3202		JIS-10K	ANSI-150LB	PN16 DIN-3202	JIS-10K	ANSI-150LB	PN16 DIN-3202							
25	1	180	90	24	125	108	115	14	15	16	70	60	68	1	90	80	85	19	15	14	4	105	33	175	12	M6	50
40	1 1/2	200	100	39	140	127	150	16	18	16	85	80	88	2	105	99	110	19	15	18	4	130	46	235	16	M8	70
50	2	220	110	49	155	152	165	18	19	18	100	92	102	2	120	121	125	19	19	18	4	136	46	235	16	M10	70
65	2 1/2	250	125	63	175	178	185	18	23	18	120	115	122	2	140	140	145	19	19	18	4	150	55	340	19.5	M10	102
80	3	260	130	74	185	190	200	18	24	20	130	127	138	2	150	153	160	19	19	18	8	160	60	340	19.5	M10	102
100	4	340	170	100	210	229	220	18	24	20	155	165	158	2	175	191	180	19	19	18	8	180	60	340	19.5	M10	102
125	5	420	210	125	250	254	250	20	24	22	185	186	188	2	210	216	210	23	22	18	8	220	65	700	25	M12	125
150	6	432	216	150	280	279	285	22	26	22	215	216	212	2	240	242	240	23	22	22	8	240	65	700	25	M12	125