

KE-8142

3-WAY OR 4-WAY TYPE BALL VALVES, FLANGED ENDS

FLANGES DIN PN16

MATERIAL: CF8M & WCB

FULL PORT, SAND CASTING

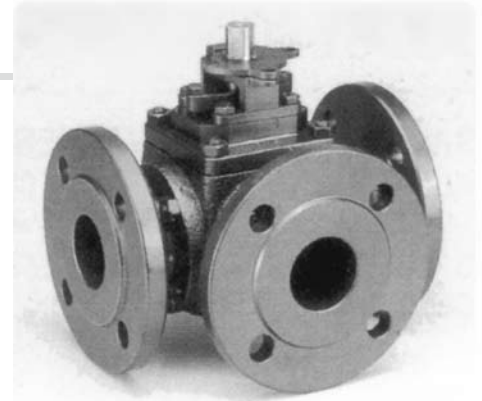
SIZE: 2" thru 8"

TEST PRESSURE:

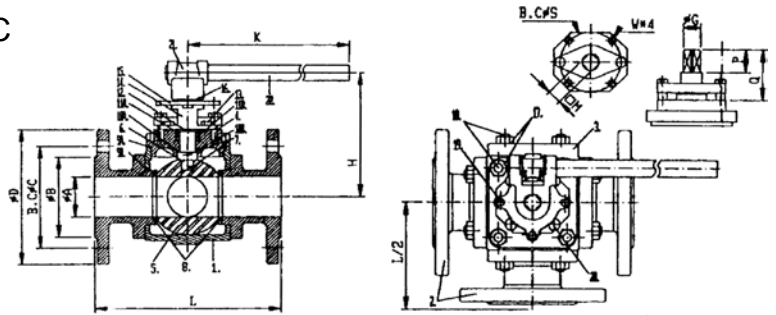
WORKING PRESSURE : 235 PSI

BALL SEAT TEST : 80 PSI BY AIR

BODY TEST : 350 PSI BY HYDROSTATIC



POSITION	1	2	3	4
L PORT				
T PORT				



DIMENSIONS						
NOMINAL SIZE	φ G	□ M	P	Q	S	W
2"	20	17	28	58.5	70	M8x1.25
2-1/2"	20	17	28	58.5	70	M8x1.25
3"	28	22	31	64.5	102	M10x1.5
4"	28	22	31	64.5	102	M10x1.5
5"	42	32	42	91.5	125	M12x1.75
6"	42	32	42	91.5	125	M12x1.75
8"	48	36	45	106.5	148	M16x2.0

DIMENSIONS												
SIZE		A	B	C	D	E	F	T	N	H	K	L
2"	MM	50	102	125	165	18	3	18	4	156	380	230
	IN	4.02	4.92	6.5	0.71	0.12	0.71	4	6.14	14.63	9.06	
2-1/2"	MM	65	122	145	185	18	3	18	4	166	380	290
	IN	4.8	5.71	7.28	0.71	0.12	0.71	4	6.54	11.96	11.42	
3"	MM	76	138	160	200	18	3	20	8	184	638	310
	IN	5.43	6.3	7.87	0.71	0.12	0.79	8	7.24	24.0	12.2	
4"	MM	108	158	180	220	18	3	20	8	212	638	350
	IN	6.22	7.09	8.66	0.71	0.12	0.79	8	8.35	24.8	13.78	
5"	MM	125	188	210	250	18	3	22	8	251	950	400
	IN	7.4	8.27	9.84	0.71	0.12	0.87	8	9.88	37.4	15.75	
6"	MM	150	212	240	285	22	3	22	8	269	950	480
	IN	8.35	9.45	11.22	0.07	0.12	0.87	8	10.6	37.4	18.9	
8"	MM	200	268	295	340	22	3	24	12	335	1150	600
	IN	10.55	11.62	13.39	0.07	0.12	0.95	12	13.19	45.27	23.62	

REMARKS

FACE TO FACE DIMENSIONS: DIN 3202 F1

END FLANGE DIMENSIONS: PN16 DIN 2633

WALL THICKNESS: ANSI B16.34

OPTIONAL GEAR OPERATION OR PIPE GR1P (S15C)

MATERIALS LIST				
ITEM	PART NAME	Q'TY	MATERIAL	
			STAINLESS STEEL	CARBON STEEL
1	BODY	1	A351-CF8M	A216-WCB
2	END CAP	3	A351-CF8M	A216-WCB
3	SEAL CAP	1	SS-316	SS-304
4	TOP COVER	1	A351-CF8	A216-WCB
5	BALL	1	SS-304	CARBON STEEL
6	STEM	1	A351-CF8M	A351-CF8
7	ANTI-STATIC	2	SS-316	
8	SEAT	4	REINFORCED PTFE	
9A	GASKET(1)	1	PTFE	
9B	GASKET(2)	4	PTFE	
10A	THRUST WASHER(1)	1	RPTFE(15%)	
10B	THRUST WASHER(2)	1	50% PTFE+50% 316	
11A	PACKING(1)	1	50% PTFE+50%316	
11B	PACKING(2)	3-4	RPTFE(15%)	
12	SLEEVE	1	SS-304	CARBON STEEL
13	GLAND	1	A351-CF8	A261-WCB
14	STOP HOUSING	1	A351-CF8	A261-WCB
15	TRAVEL STOPPER	1	SS-304	ZINC PLATES C.S
16	SNAP RING	1	SS-304	
17	STUD	20-52	SS-304(B8)	CARBON STEEL (B7)
18	NUT	20-52	SS304(B8)	CARBON STEEL(H)
19	GLAND NUT	2	SS-304	CARBON STEEL
20	STOP HOUSING BOLT	1	SS-304	CARBON STEEL
21	JUNCTION HEAD	1	SS-304	CARBON STEEL
22	PIPE GRIP	1	SS-304	SGP