

KE-8242

3-WAY BALL VALVES, SCREWED ENDS,

MATERIAL: CF8M

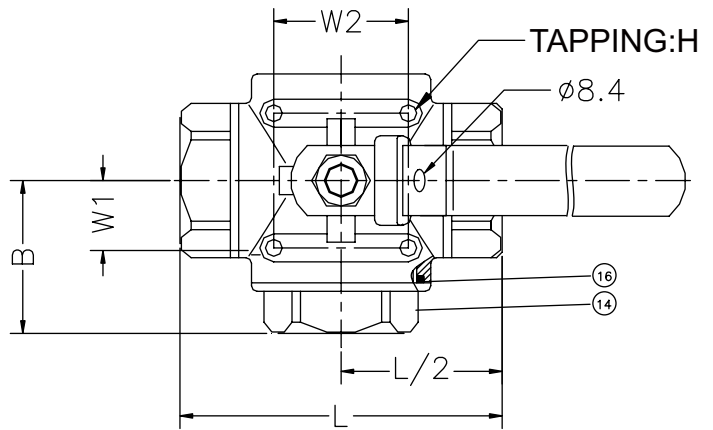
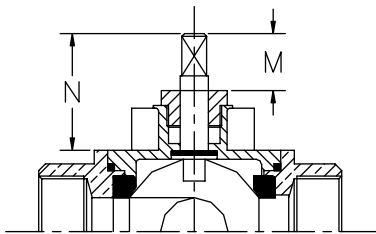
STANDARD PORT

SIZE: 1/4" thru 2"

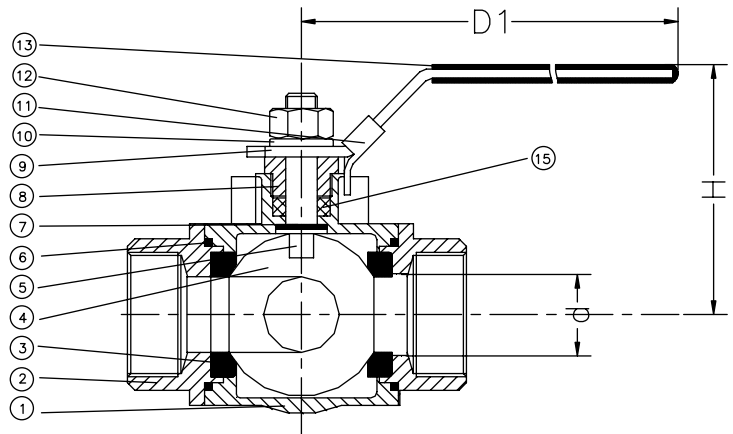
WORKING PRESSURE: 1000 WOG



PORT TYPE \	1	2	3	4
L				
T				



MATERIALS LIST		
NO.	PART NAME	MATERIAL
1	BODY	CF8M
2	CAP	CF8M
3	SEAT	PTFE
4	BALL	SS 316
5	STEM	SS 316
6	GASKET	PTFE
7	THRUST WASHER	PTFE
8	GLAND	SS 316
9	HANDLE	SS 304
10	HANDLE WASHER	SS 304
11	LOCKING PLATE	SS 304
12	HANDLE NUT	SS 304
13	HANDLE SLEEVE	VINYL GRIP
14	CAP	CF8M
15	STEM PACKING	PTFE
16	GASKET	PTFE



DIMENSIONS										
										Unit:mm
SIZE	d	L	H	D1	B	W1	W2	h	M	N
1/4"	11.0	69.4	61	106	35	13	28.5	10-24 UNC	13	24
3/8"	11.0	69.4	61	106	35	13	28.5	10-24 UNC	13	24
1/2"	12.7	76	65.5	138	37	13	28.5	10-24 UNC	20	30
3/4"	16.0	86.6	71	138	45	21	34.6	10-24 UNC	19.5	31
1"	20.0	102	76	157	51	21	34.6	10-24 UNC	23	40
1-1/4"	25.0	118	81.5	157	58	24	38	1/4-20 UNC	23	41.5
1-1/2"	32.0	126	102	222	63	24	38	1/4-20 UNC	26	50.5
2"	38.1	149	112	222	77	24	38	1/4-20 UNC	26	55.5

PRESSURE TEMPERATURE RATINGS

