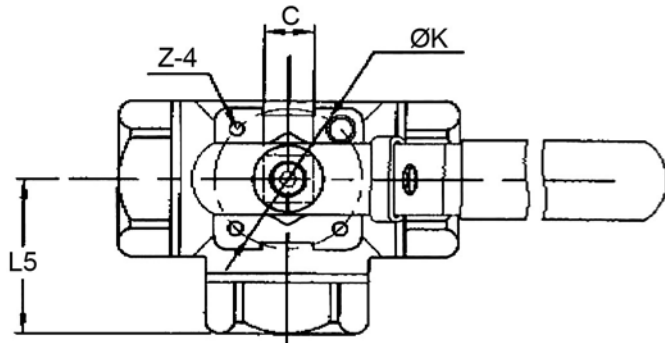


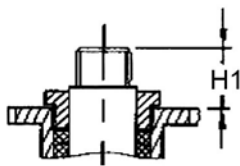
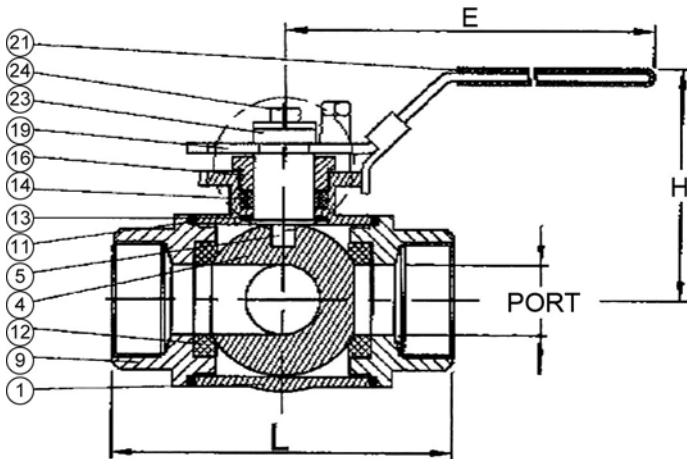
# KE-8245

## 3-WAY TYPE BALL VALVES, SCREWED ENDS

MATERIAL: S.S.316, INVESTMENT CASTING  
 SIZE: 1/4" thru 3"  
 WORKING PRESSURE: 1000 WOG



POSITION	1	2	3	4
L PORT				
T PORT				



MATERIALS LIST		
No.	PART NAME	MATERIAL
1	BODY	ASTM A351 Gr.CF8M
4	BALL	ASTM A351 Gr.CF8M
5	STEM	SS 316
9	END CAP	ASTM A351 Gr.CF8M
11	BODY SEAL	PTFE
12	SEAT	PTFE
13	THRUST WASHER	PTFE
14	STEM PACKING	PTFE
16	GLAND NUT	SS 304
19	HANDLE	SS 304
21	HANDLE COVER	VINYL GRIP
23	HANDLE WASHER	SS 304
24	HANDLE NUT	SS 304

DIMENSIONS										Unit:mm
SIZE	PORT	L	L5	E	H	H1	C	ØK	Z-4	
DN8	1/4"	11	69.4	34.6	133.4	60.7	10.7	9	42	M5xP0.8
DN10	3/8"	11	69.4	34.6	133.4	60.7	10.7	9	42	M5xP0.8
DN15	1/2"	12.5	75.7	37.3	133.4	64.1	10.7	9	42	M5xP0.8
DN20	3/4"	16	86.6	44.7	178.5	82.4	13.9	11	50	M6xP1.0
DN25	1"	20	102.4	51.4	178.5	86.1	20	11	50	M6xP1.0
DN32	1-1/4"	25	118.2	57.7	209.9	91.4	23.8	11	50	M6xP1.0
DN40	1-1/2"	32	125.8	62.7	208	102.7	25.8	11	70	M8xP1.25
DN50	2"	38	149	74.6	229.9	110.7	25.3	14	70	M8xP1.25
DN65	2-1/2"	50	160	80	229.9	115.8	24.5	14	70	M8xP1.25
DN80	3"	65	185	92.5	265	132	25.5	17	102	M10xP1.5