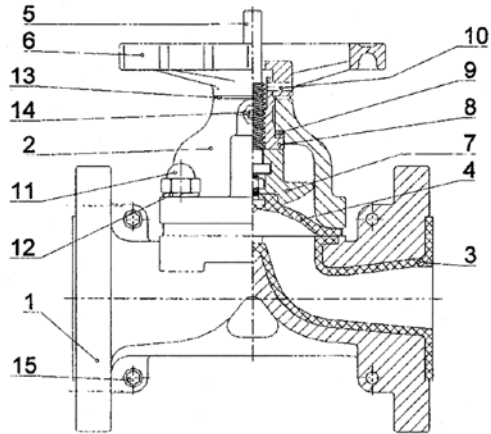


# KE-8114C

## DIAPHRAGM VALVE, FLANGED ENDS.

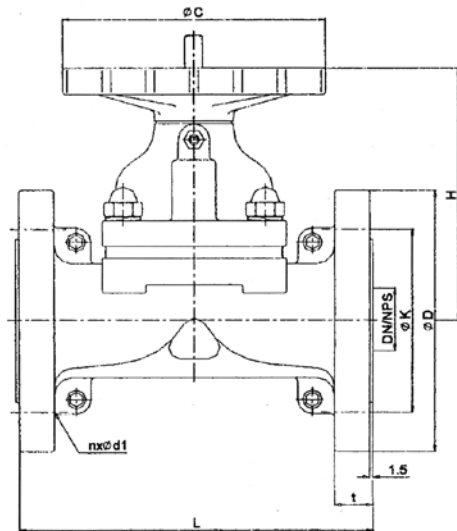
MATERIAL: FCD-40

SIZE: DN15 thru DN150



KE-8114C

C/W ACTUATOR



| MATERIALS LIST |               |                                     |
|----------------|---------------|-------------------------------------|
| Item           | PART NAME     | MATERIALS                           |
| 1              | Body          | FCD-40                              |
| 2              | Bonnet        | FCD-40                              |
| 3              | Lining        | Ceramic                             |
| 4              | Diaphragm     | PTFE with EPDM                      |
| 5              | Stem          | SS41                                |
| 6              | Handwheel     | Nodular iron                        |
| 7              | Compressor    | Nodular iron                        |
| 8              | Stem Bush     | Bronze                              |
| 9              | Trust Bearing | Steel(available from size 65-250mm) |
| 10             | Fitting Screw | Steel                               |
| 11             | Bolts & Nuts  | SS41(Zinc Plating)                  |
| 12             | Spring Washer | Spring steel (Zinc plating)         |
| 13             | Washer        | Steel (Zinc plating)                |
| 14             | Grease Nipple | Bronze                              |
| 15             | Nuts          | SS41                                |

Valves body material: FCD-40  
Lined material: Ceramic  
Diaphragm material: PTFE with EPDM

### End connection

JIS 10K  
ANSI 150LB  
DIN PN16

| DIMENSIONS      |     |     |     |    |         |     |         |            |       |         |          |     |         | Unit:mm  |
|-----------------|-----|-----|-----|----|---------|-----|---------|------------|-------|---------|----------|-----|---------|--|
| SIZE<br>φ d(mm) | L   | H   | φ C | t  | JIS 10K |     |         | ANSI 150LB |       |         | DIN PN16 |     |         | Maximum working pressure<br>kg/cm <sup>2</sup> |
|                 |     |     |     |    | φ D     | φ K | nx φ d1 | φ D        | φ K   | nx φ d1 | φ D      | φ K | nx φ d1 |  |
| 15              | 135 | 97  | 105 | 16 | 95      | 70  | 4x15    | 89         | 60.5  | 4x16    | 95       | 65  | 4x14    | 12   |
| 20              | 135 | 102 | 105 | 18 | 100     | 75  | 4x15    | 98         | 70.0  | 4x16    | 105      | 75  | 4x14    | 12   |
| 25              | 145 | 117 | 105 | 18 | 125     | 90  | 4x19    | 108        | 79.5  | 4x16    | 115      | 85  | 4x14    | 10   |
| 40              | 180 | 152 | 135 | 20 | 140     | 105 | 4x19    | 127        | 98.5  | 4x16    | 150      | 110 | 4x18    | 10   |
| 50              | 210 | 157 | 155 | 20 | 155     | 120 | 4x19    | 152        | 120.5 | 4x19    | 165      | 125 | 4x18    | 10   |
| 65              | 250 | 182 | 180 | 22 | 175     | 140 | 4x19    | 178        | 139.5 | 4x19    | 185      | 145 | 4x18    | 10   |
| 80              | 300 | 192 | 210 | 22 | 185     | 150 | 8x19    | 190        | 152.5 | 4x19    | 200      | 160 | 8x18    | 8  |
| 100             | 350 | 232 | 230 | 24 | 210     | 175 | 8x19    | 229        | 190.5 | 8x19    | 220      | 180 | 8x18    | 8  |
| 125             | 400 | 302 | 280 | 24 | 250     | 210 | 8x22    | 254        | 216.5 | 8x22    | 250      | 210 | 8x18    | 8  |
| 150             | 460 | 352 | 320 | 26 | 280     | 240 | 8x22    | 279        | 241.5 | 8x22    | 285      | 240 | 8x23    | 6  |

Remarks: Order of special dimension is available and acceptable on request.