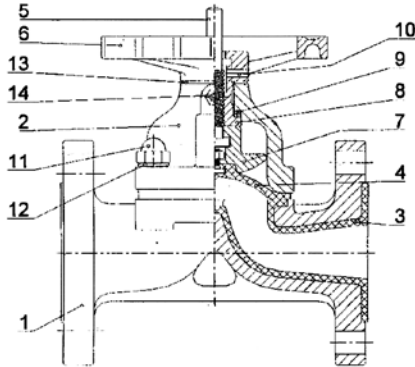


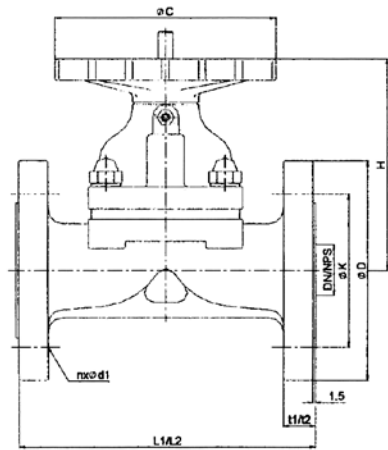
KE-8114U

DIAPHRAGM VALVE, FLANGED ENDS.

MATERIAL: C.I., D.I., S.S.304 & S.S.316
 SIZE: DN15 thru DN150



MATERIALS LIST					
Item	PART NAME	MATERIALS			
1	Body	FC 20	FCD-40	SCS 13	SCS 14
2	Bonnet	FC 20	FCD-40	SCS 13	SCS 14
3	Lining	NEOPRENE	PTFE		
4	Diaphragm	EPDM	PTFE		PTFE
5	Stem	SS41	SS41	SUS304	SUS304
6	Handwheel	Nodular iron			
7	Compressor	Nodular iron			
8	Stem Bush	Bronze			
9	Trust Bearing	Steel(available from size 65~250mm)			
10	Fitting Screw	Steel			
11	Bolts & Nuts	SS41(Zinc plating)		304 SS	
12	Spring Washer	Spring steel (Zinc plating)			
13	Washer			PTFE	
14	Grease Nipple			Bronze	



Diaphragm material
 NEOPRENE
 VITON
 EPDM
 PTFE
 HYPALON

Body material
 FC 20
 FCD 40
 SCS 13
 SCS 14

End connection
 JIS 10K
 ANSI 150LB
 DIN PN16

Lined material
 Unlined
 NEOPRENE lined
 PTFE(4F) lined

DIMENSIONS																	Unit:mm
SIZE		L1	L2	H	φ C	t		JIS 10K			ANSI 150LB			DIN PN16			Maximum working pressure kg/cm ²
DN	Inch					t1	t2	φ D	φ K	nx φ d1	φ D	φ K	nx φ d1	φ D	φ K	nx φ d1	
15	1/2"	125	130	105	80	16	12	95	70	4x15	89	60.5	4x16	95	65	4x14	12
20	3/4"	135	150	130	100	18	14	100	75	4x15	98	70.0	4x16	105	75	4x14	12
25	1"	145	160	130	105	18	14	125	90	4x19	108	79.5	4x16	115	85	4x14	10
40	1 1/2"	170	200	162	135	20	16	140	105	4x19	127	98.5	4x16	150	110	4x18	10
50	2"	200	230	180	155	20	16	155	120	4x19	152	120.5	4x19	165	125	4x18	10
65	2 1/2"	230	290	220	180	22	18	175	140	4x19	178	139.5	4x19	185	145	4x18	10
80	3"	260	310	237	210	22	18	185	150	8x19	190	152.5	4x19	200	160	8x18	10
100	4"	320	350	250	230	24	20	210	175	8x19	229	190.5	8x19	220	180	8x18	10
125	5"	360	400	300	280	24	20	250	210	8x22	254	216.0	8x22	250	210	8x18	8
150	6"	410	480	325	320	26	22	280	240	8x22	279	241.5	8x22	285	240	8x23	6
200	8"	520	600	375	400	26	22	330	290	12x22	343	298.5	12x22	340	295	8x23	6
250	10"	645	730	500	550	30	26	400	355	12x25	400	362.0	12x25	395	350	12x23	6

Remarks: Order of special dimension is available and acceptable on request.

t1=FC,FCD
 t2=SCS13, SCS14

L1=ANSI 150LB, JIS10K
 L2=DIN PN16