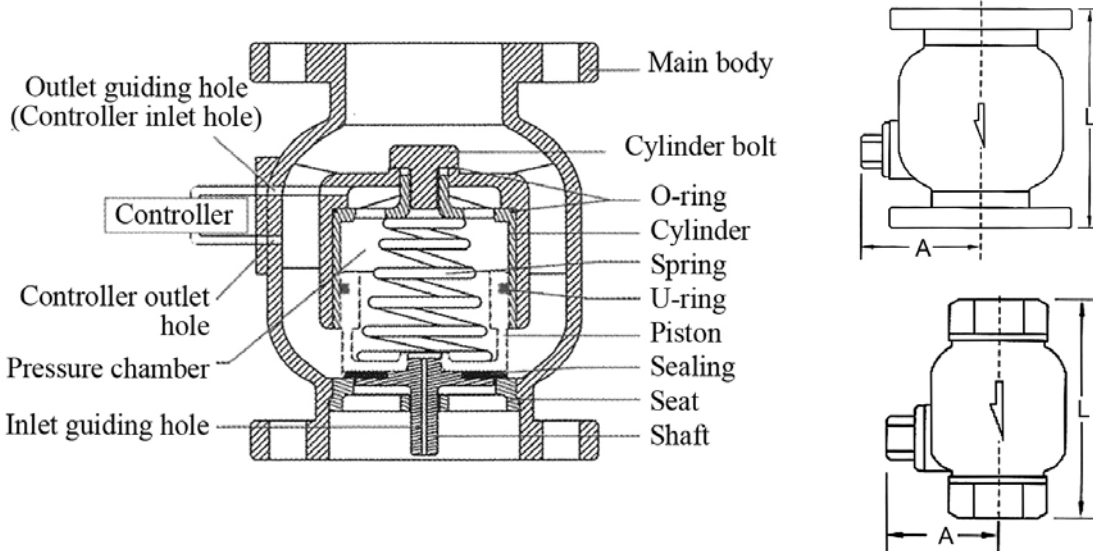


# KE-8209

## FLOAT VALVE

SCREWED & FLANGED ENDS  
 MATERIAL: S.S. 304/ 316, C.I., D.I., BRONZE  
 SIZES: 1-1/2" thru 14"



SCREWED ENDS DIMENSIONS				
SIZE	L(mm)	A(mm)	Weight(kg)	CV
1-1/2"	120	75	3.5	48
2"	200	95	8	75
3"	235	115	13	140

FLANGED ENDS DIMENSIONS				
SIZE	L(mm)	A(mm)	Weight(kg)	CV
2"	190	95	0	75
2-1/2"	210	100	13	105
3"	225	115	16	140
4"	250	127	22	260
5"	280	150	30	390
6"	310	165	42	550
8"	420	205	85	1000
10"	470	240	150	1600
12"	530	275	200	2200
14"	600	320	280	3000

Flow Chart of Float Valve

