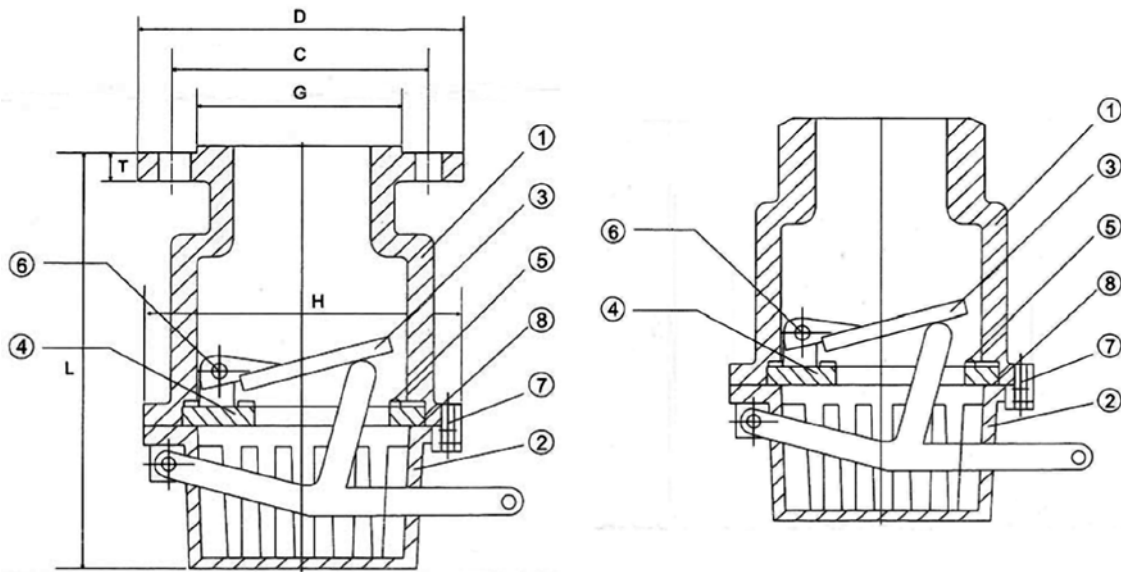


# KE-8100A & KE-8200A

## FOOT VALVES WITH LEVER

SCREWED AND FLANGED ENDS  
 FLANGES: JIS 10K/ANSI 150LB  
 MATERIAL: S.S. 304 & C.I.  
 SIZE: 2" thru 16"



### MATERIAL LIST

No.	PART NAME	MATERIAL	
1	BODY	CAST IRON	S.S. 304
2	CAP	CAST IRON	S.S. 304
3	DISC	S.S. 304	S.S. 304
4	SEAT	CAST IRON	S.S. 304
5	SEAT RING	NBR	VITON
6	SEAT BOLT	S.S. 304	S.S. 304
7	BOLT	S.S. 304	S.S. 304
8	PACKING	NBR	VITON

### DIMENSIONS

SIZE	Inch	2"	2 1/2"	3"	4"	5"	6"	8"	10"	12"	14"	16"
	mm	50	65	80	100	125	150	200	250	300	350	400
L		235	265	285	305	380	390	540	630	720	840	980
H		155	170	190	220	255	295	365	435	485	535	600
D (10K)		155	175	185	210	250	280	330	400	445	490	560
D (150LB)		152	178	190	229	254	279	343	406	483	533	597
C (10K)		120	140	150	175	210	240	290	355	400	445	510
C (150LB)		120.5	139.5	152.5	190.5	216	241.5	298.5	362	432	476.2	539.7
G (10K)		100	120	130	155	185	215	265	325	370	415	475
G (150LB)		90	105	127	157	186	216	270	324	381	413	470
D (10K)		20	22	22	24	24	26	26	30	32	34	36
D (150LB)		19.1	22.3	23.9	23.9	23.9	25.4	28.6	30.2	31.8	35	36.6