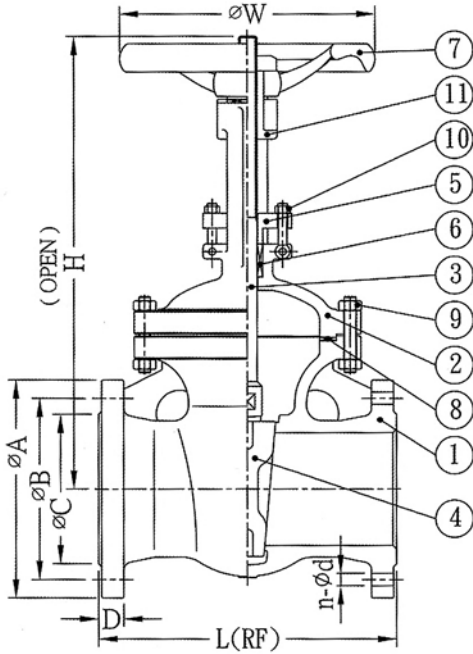


KE-8181

GATE VALVES, FLANGED ENDS,

FLANGES: ANSI 300LB, JIS 20K & DIN PN 40
 MATERIAL: S.S. 316/304, S.S. 316L/304L & C.S. WCB
 SIZE: 1/2" THRU 12"



MATERIALS LIST						
NO.	PART NAME	MATERIAL				
		SS 304	SS 316	SS 304L	SS 316L	CS WCB
1.	BODY	A351-CF8	A351-CF8M	A351-CF3	A351-CF3M	A216-WCB
2.	BONNET	A351-CF8	A351-CF8M	A351-CF3	A351-CF3M	A216-WCB
3.	STEM	AISI-304	AISI-316	AISI-304	AISI-316	A182-F6
4.	DISC	A351-CF8	A351-CF8M	A351-CF3	A351-CF3M	A216-WCB
5.	GLAND	A351-CF8	A351-CF8M	A351-CF3	A351-CF3M	A182-F6
6.	GLAND PACKING	PTFE/ GRAPHITE				
7.	HANDWHEEL	DUCTILE IRON				
8.	GASKET	PTFE/ GRAPHITE				
9.	BONNET BOLT/ NUT	AISI-304				
10.	GLAND BOLT/ NUT	AISI-304				
11.	YOKE SLEEVE	BRONZE/ DUCTILE IRON				

ANSI 300														DIMENSIONS		Unit: mm	
SIZE	Inch	1/2"	3/4"	1"	1-1/2"	2"	2 1/2"	3"	4"	5"	6"	8"	10"	12"			
	mm	15	20	25	40	50	65	80	100	125	150	200	250	300			
L		140	152	165	190	216	241	283	305	381	403	419	457	502			
H		160	234	250	322	351	399	474	543	616	739	933	1138	1338			
W		100	120	140	165	190	190	215	240	270	330	375	420	550			
A		95	117	124	156	165	190	210	254	279	318	381	444	521			
B		66.5	82.5	89	114.5	127	149	168	200	235	270	330	387.5	451			
C		35	43	51	73	82	105	127	157	186	216	270	324	381			
D		14.3	15.9	17.5	20.7	22.3	25.4	28.6	31.8	35	36.6	41.3	47.7	50.8			
n-φd		4-16	4-19	4-19	4-22	8-19	8-22	8-22	8-22	8-22	12-22	12-25	16-29	16-32			
JIS 20K																	
SIZE	Inch	1/2"	3/4"	1"	1-1/2"	2"	2 1/2"	3"	4"	5"	6"	8"	10"	12"			
	mm	15	20	25	40	50	65	80	100	125	150	200	250	300			
L		140	152	165	190	216	241	283	305	381	403	419	457	502			
H		160	234	250	322	351	399	474	543	616	739	933	1138	1338			
W		100	120	140	165	190	190	215	240	270	330	375	420	550			
A		95	100	125	140	155	175	200	225	270	305	350	430	480			
B		70	75	90	105	120	140	160	185	225	260	305	380	430			
C		51	56	67	81	96	116	132	160	195	230	270	345	395			
D		14	16	16	18	18	20	22	24	26	28	30	34	36			
n-φd		4-15	4-15	4-19	4-19	8-19	8-19	8-23	8-23	8-25	12-25	12-25	12-27	16-27			
DIN PN 40 (L: DN15~150=F1, DN200~300=F4)																	
SIZE	Inch	1/2"	3/4"	1"	1-1/2"	2"	2 1/2"	3"	4"	5"	6"	8"	10"				
	mm	15	20	25	40	50	65	80	100	125	150	200	250				
L		140	152	165	190	216	241	283	305	381	403	419	457				
H		160	234	250	322	351	399	474	543	616	739	933	1138				
W		100	120	140	165	190	190	215	240	270	330	375	420				
A		95	105	115	150	165	185	200	235	270	300	375	450				
B		65	75	85	110	125	145	160	190	220	250	320	385				
C		45	58	68	88	102	122	138	162	188	218	285	345				
D		16	18	18	18	20	22	24	24	26	28	34	38				
n-φd		4-14	4-14	4-14	4-18	4-18	8-18	8-18	8-22	8-26	8-26	12-30	12-33				