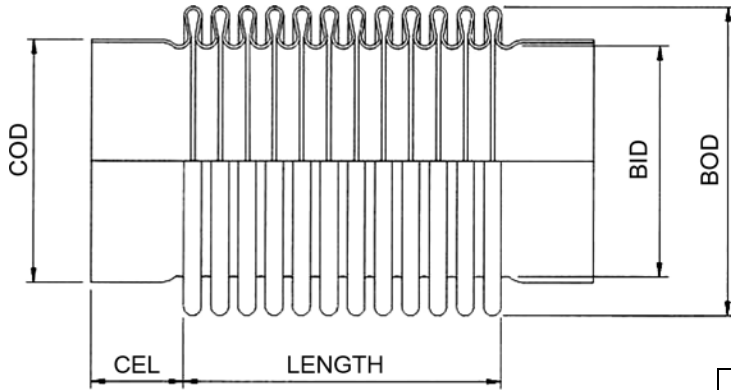
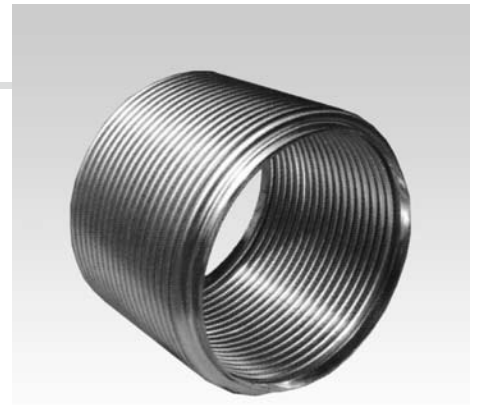


# KE-8400

## METALLIC BELLOWS

MATERIAL: S.S. 316 / 304  
 SIZE: 1/2" thru 18"



| LENGTH  |            |          | Unit:mm |
|---------|------------|----------|---------|
| NEUTRAL | COMPRESSED | EXTENDED |         |
| 90      | 70         | 95       |         |
| 180     | 170        | 190      |         |
| 270     | 210        | 285      |         |

| DIMENSIONS   |     |     |       |       |       |     | MAX. WORKING PRESSURE |     |
|--------------|-----|-----|-------|-------|-------|-----|-----------------------|-----|
| NOMINAL BORE |     | PLY | BOD   | BID   | COD   | CEL |                       |     |
| inch         | mm  | NO. | mm    | mm    | mm    | mm  | bar                   | psi |
| 1/2"         | 15  | 1   | 25.4  | 17.0  | 17.7  | 15  | 25                    | 363 |
| 3/4"         | 20  | 1   | 32.7  | 22.2  | 23.1  | 15  | 25                    | 363 |
| 1"           | 25  | 1   | 39.0  | 26.9  | 28.0  | 15  | 25                    | 363 |
| 1-1/4"       | 32  | 1   | 48.0  | 34.0  | 35.0  | 15  | 10                    | 145 |
|              |     | 2   | 48.0  | 35.8  | 37.0  | 20  | 25                    | 363 |
| 1-1/2"       | 40  | 1   | 58.5  | 43.8  | 45.0  | 20  | 10                    | 145 |
|              |     | 2   | 58.0  | 43.4  | 45.0  | 20  | 25                    | 363 |
| 2"           | 50  | 1   | 73.0  | 55.4  | 57.0  | 20  | 10                    | 145 |
|              |     | 2   | 74.5  | 55.2  | 56.2  | 20  | 25                    | 363 |
| 2-1/2"       | 65  | 1   | 90.0  | 69.0  | 71.0  | 20  | 10                    | 145 |
|              |     | 2   | 90.0  | 68.2  | 71.0  | 20  | 25                    | 363 |
| 3"           | 80  | 1   | 104.0 | 82.0  | 84.0  | 20  | 10                    | 145 |
|              |     | 2   | 104.5 | 80.8  | 84.0  | 20  | 25                    | 363 |
| 4"           | 100 | 1   | 131.0 | 104.7 | 107.0 | 20  | 10                    | 145 |
|              |     | 2   | 128.3 | 103.7 | 107.0 | 20  | 25                    | 363 |

| DIMENSIONS   |     |     |       |       |       |     | MAX. WORKING PRESSURE |     |
|--------------|-----|-----|-------|-------|-------|-----|-----------------------|-----|
| NOMINAL BORE |     | PLY | BOD   | BID   | COD   | CEL |                       |     |
| inch         | mm  | NO. | mm    | mm    | mm    | mm  | bar                   | psi |
| 5"           | 125 | 1   | 158.0 | 130.0 | 134.2 | 20  | 10                    | 145 |
|              |     | 2   | 161.0 | 130.7 | 134.2 | 20  | 25                    | 363 |
| 6"           | 150 | 1   | 192.0 | 160.0 | 163.0 | 20  | 10                    | 145 |
|              |     | 2   | 190.0 | 159.0 | 163.0 | 20  | 25                    | 363 |
| 8"           | 200 | 1   | 252.0 | 215.0 | 218.0 | 20  | 10                    | 145 |
|              |     | 2   | 250.0 | 214.0 | 218.0 | 20  | 16                    | 232 |
|              |     | 3   | 250.0 | 213.0 | 218.0 | 20  | 25                    | 363 |
| 10"          | 250 | 1   | 313.0 | 272.0 | 275.4 | 20  | 10                    | 145 |
|              |     | 2   | 312.0 | 271.0 | 275.3 | 20  | 16                    | 232 |
|              |     | 3   | 312.0 | 269.8 | 275.3 | 20  | 25                    | 363 |
| 12"          | 300 | 1   | 362.0 | 321.0 | 324.5 | 20  | 10                    | 145 |
|              |     | 2   | 362.0 | 320.4 | 325.3 | 20  | 16                    | 232 |
|              |     | 3   | 364.5 | 322.0 | 328.5 | 20  | 25                    | 363 |
| 14"          | 350 | 1   | 397.0 | 355.6 | 357.0 | 20  | 10                    | 145 |
|              |     | 2   | 397.0 | 354.6 | 354.6 | 20  | 16                    | 232 |
|              |     | 3   | 397.0 | 353.4 | 353.4 | 20  | 25                    | 363 |
| 16"          | 400 | 1   | 454.0 | 406.4 | 408.0 | 20  | 10                    | 145 |
|              |     | 2   | 454.0 | 405.2 | 408.0 | 20  | 16                    | 232 |
|              |     | 3   | 454.0 | 403.8 | 408.0 | 20  | 25                    | 363 |
| 18"          | 450 | 1   | 506.8 | 457.2 | 458.8 | 20  | 10                    | 145 |
|              |     | 2   | 506.8 | 456.0 | 458.8 | 20  | 16                    | 232 |
|              |     | 3   | 506.8 | 454.6 | 458.8 | 20  | 25                    | 363 |

Other movements, sizes, and pressure bellows available on request.