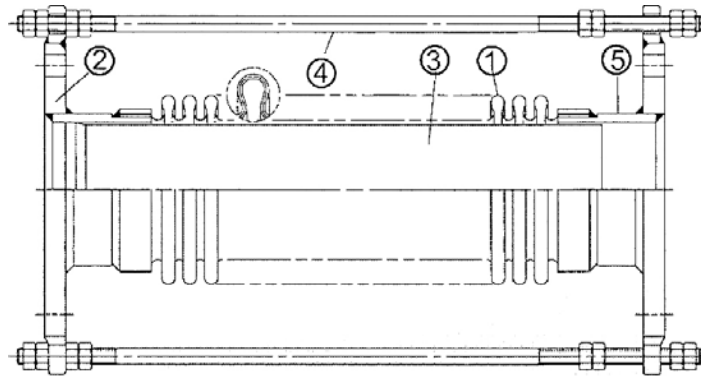
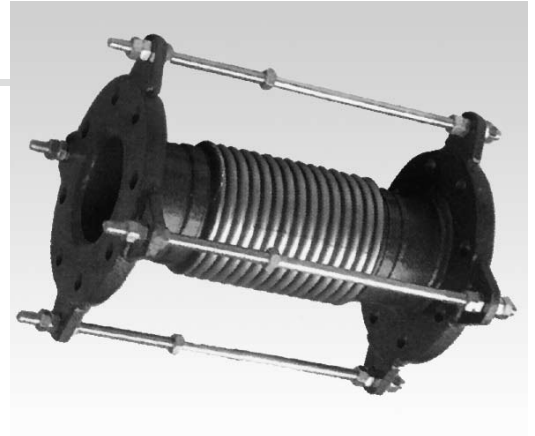


KE-8405

EXPANSION JOINT, FLANGED ENDS

MATERIAL: S.S. 316/ 304
 SIZE: 1-1/2" thru 24"



MATERIAL LIST		
ITEM	PARTS	MATERIAL
1	BELLOWS	SUS 304 / SUS 316
2	FLANGES	SS 400
3	INTERNAL SLEEVE	SUS 304
4	TIE RODS	SS-41 / SUS 304
5	TUBE ENDS	SGP / SUS 304 / 316

Nominal Bore		Total Length		Effective Area	Axial Movement		Working Pressure
mm	Ins	mm	Ply	cm ²	mm		kg/cm ²
40	1-1/2	350	2	17.6	+10	-40	25
50	2	350	2	30.4	+10	-40	25
65	2-1/2	350	2	43.8	+10	-40	25
80	3	350	2	62.8	+10	-40	25
100	4	350	2	107.7	+10	-40	25
125	5	350	2	162.9	+10	-40	25
150	6	350	2	227.5	+10	-40	25
200	8	350	2	385.3	+10	-40	25
250	10	350	2	670.0	+10	-40	25
300	12	350	2	923.5	+10	-40	25
350	14	350	2	1102	+10	-40	20
400	16	350	2	1464	+10	-40	20
450	18	350	2	1829	+10	-40	20
500	20	350	2	2235	+10	-40	20
600	24	350	2	3167	+10	-40	20