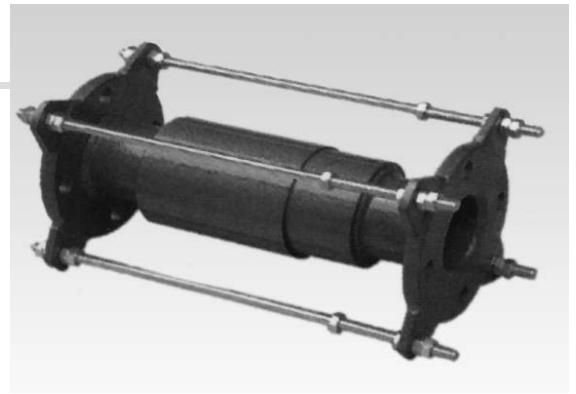


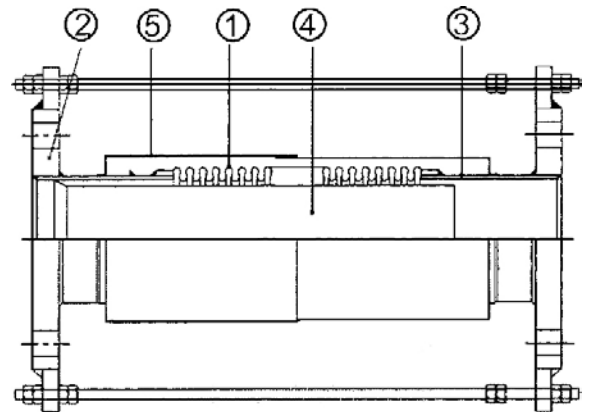
KE-8406

EXPANSION JOINT, FLANGED ENDS WITH EXTERNAL COVER

MATERIAL: S.S. 316/ 304
 SIZE: 1-1/2" thru 14"



MATERIAL LIST		
ITEM	PARTS	MATERIAL
1	BELLOWS	SUS 304 / SUS 316
2	FLANGES	SS 400 / SUS 304 / 316
3	TUBE ENDS	SGP / SUS304 / 316
4	INTERNAL SLEEVE	SUS 304
5	EXTERNAL COVER	SS 400 / SUS 304 / 316



(A) for medium or low pressure

Nominal Bore		Total Length	Bellows		Axial Movement	Effective Area	Working Pressure
mm	Ins		O.D.	Corr's No. (A)			
		mm			mm (A)	cm ² (A)	kg/cm ² (A)
40	1-1/2	400	58	26	+10 -30	22.2	10
50	2	400	70	24	+10 -35	34.4	10
65	2-1/2	400	86	20	+10 -35	52.5	10
80	3	400	101	20	+10 -40	71.2	10
100	4	400	128	16	+10 -40	110.5	10
125	5	400	157	15	+10 -40	168.7	10
150	6	400	185	14	+10 -40	233.9	10
200	8	400	243	13	+10 -40	389.1	10
250	10	400	297	12	+10 -40	592.2	10
300	12	400	348	12	+10 -40	829.7	10
350	14	400	380	12	+10 -40	1102	10

(B) for high pressure

Nominal Bore		Total Length	Bellows		Axial Movement	Effective Area	Working Pressure
mm	Ins		O.D.	Corr's No. (B)			
		mm			mm (B)	cm ² (B)	kg/cm ² (B)
40	1-1/2	400	58	32	+10 -40	17.6	25
50	2	400	70	24	+10 -40	30.4	25
65	2-1/2	400	86	20	+10 -40	43.8	25
80	3	400	101	20	+10 -40	62.8	25
100	4	400	128	16	+10 -40	107.7	25
125	5	400	157	15	+10 -40	162.9	25
150	6	400	185	14	+10 -40	227.5	25
200	8	400	243	13	+10 -40	385.3	25
250	10	400	297	12	+10 -40	670.1	25
300	12	400	348	12	+10 -40	923.5	25
350	14	400	380	12	+10 -40	1102	25