

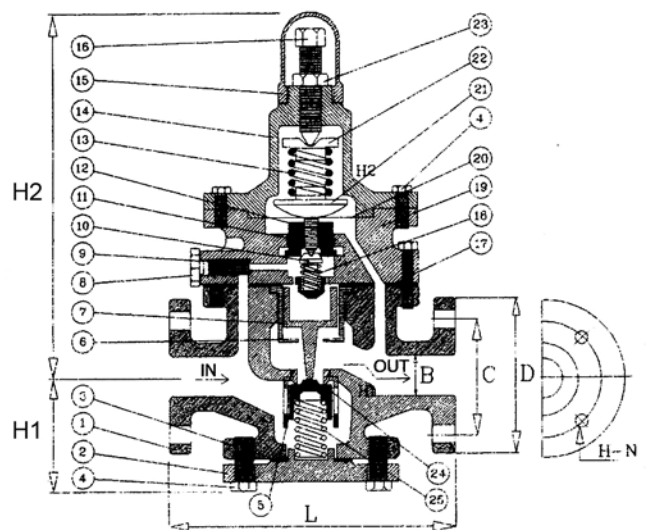
# KE-8151

## PRESSURE REDUCING VALVES, FLANGED ENDS FLANGES: JIS 10K, ANSI 150LB & DIN PN-16

MATERIAL: C.I. FC-20, (SAND CASTING)  
SIZE: 1/2" thru 6"



MATERIALS LIST		
NO.	PART NAME	MATERIAL
1	MAIN BODY	CAST IRON
2	BUTOM COVER	CAST IRON
3	GASKET	ASBESTOS
4	BOLT	SS41
5	VALVE SEAT	CF8
6	CYLINDER	CF8
7	PISTON	CF8
8	STRAINER PLUG	SS41
9	SCREEN	S.S. 304
10	SPRING KNOB	SUS304
11	PIN GUIDE	SUS304
12	FLOATING PIN	SUS304
13	UPPER SPRING	SUP-6
14	TOP COVER	CAST IRON
15	TOP CAP	A356.2
16	ADJUSTING SCREW	BRASS
17	BODY GASKET	ASBESTOS
18	CENTRAL SPRING	SUP-6
19	TRANSIT BODY	CAST IRON
20	DIAPHRAGM DISC	AIS-301
21	SPRING KNOB	CF8
22	SPRING HOLDER	CF8
23	POSITION NUT	BRASS
24	GASKET	PTFE
25	LOWER SPRING	SUP-6



WORKING CONDITION	
WORKING PRESSURE	0.1-10 KG/CM <sup>2</sup>
MAX. WORKING TEMPERATURE	220°C
MEDIUM	STEAM

DIMENSIONS																		Unit:mm
SIZE	L	H1	H2	B	D			C			H			N				
					JIS-10K	ANSI-150LB	DIN PN-16	JIS-10K	ANSI-150LB	DIN PN-16	JIS-10K	ANSI-150LB	DIN PN-16	JIS-10K	ANSI-150LB	DIN PN-16		
15	155	74	260	15	95	89	95	70	60.5	65	15	15	14	4	4	4		
20	155	74	260	20	100	98	105	75	70	75	15	15	14	4	4	4		
25	165	74	260	25	125	108	115	90	79.5	85	19	15	14	4	4	4		
32	195	99	280	32	135	117	140	100	89	100	19	15	18	4	4	4		
40	195	99	280	40	140	127	150	105	98.5	110	19	15	18	4	4	4		
50	225	116	310	50	155	152	165	120	120.5	125	19	19	18	4	4	4		
65	250	125	322	65	175	178	185	140	139.5	145	19	19	18	4	4	4		
80	290	135	325	80	185	190	200	150	152.5	160	19	19	18	8	4	8		
100	330	153	370	100	210	229	220	175	190.5	180	19	19	18	8	8	8		
125	410	195	540	125	250	254	250	210	216	210	23	22	18	8	8	8		
150	410	195	540	150	280	279	285	240	241.5	240	23	22	22	8	8	8		