

# KE-8151A

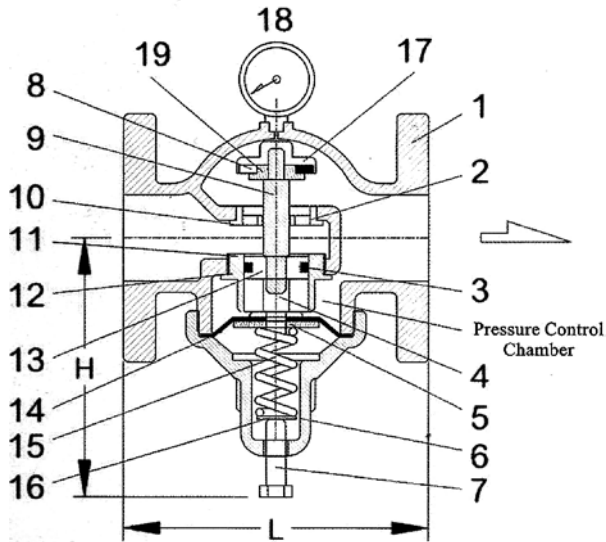
## DIRECT-ACTIVATED PRESSURE REDUCING VALVE FLANGED ENDS

MATERIAL: S.S. 316 & CAST IRON

SIZE: 2" thru 4"

PRESSURE: 0.5~5 kgf/cm<sup>2</sup>, 3~8kgf/cm<sup>2</sup>

TEMPERATURE: -15~ 80°C



MATERIAL LIST		
NO	PART NAME	MATERIAL
1	MAIN BODY	CAST IRON / SS 316
2	O-RING	NBR
3	U-RING	NBR
4	DIAPHRAGM FIXED BAR	BRASS
5	DIAPHRAGM WASHER	BRASS
6	VALVE COVER	CAST IRON / SS 316
7	ADJUSTING STEM	STAINLSS STEEL
8	SEALING SPACER	NBR
9	CENTER SHAFT	BRASS / SS 316
10	SHAFT GUIDING SEAT	BRONZE
11	CYLINCLER	BRONZE
12	O-RING	NBR
13	PISTON	BRONZE / SS 316
14	DIAPHRAGM	NBR
15	SPRING	STAINLSS STEEL
16	SPRING POSITIONER	BRASS
17	VALVE COVER GATE	BRASS
18	PRESSURE GAUGE	UPON REQUEST
19	SEALING RING	BRASS

DIMENSIONS Unit:mm			
SIZE	H(mm)	L(mm)	CV Value
2"	150	190	21
2.5"	165	210	38
3"	200	225	55
4"	220	250	95

Flow Chart of Direct-activated Pressure Reducing Valve

