

KE-8251

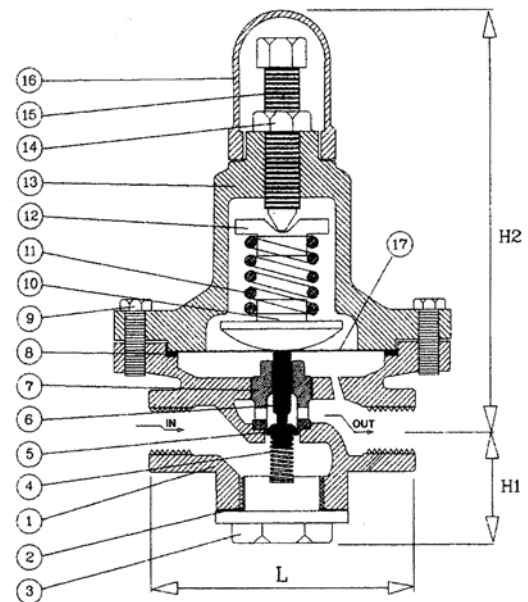
PRESSURE REDUCING VALVES, SCREWED ENDS

MATERIAL: C.I. FC-20, SAND CASTING
SIZE: 1/2" thru 2"



WORKING CONDITION	
WORKING PRESSURE	0.1-10 KG/CM ²
MAX. WORKING TEMPERATURE	220°C
MEDIUM	STEAM

MATERIALS LIST		
NO	PART NAME	MATERIAL
1	BODY	CAST IRON
2	GASKET	ASBESTOS
3	BOTTOM PLUG	CAST IRON
4	BOTTOM SPRING	SUP-6
5	SPRING KNOB	PTFE
6	STEM	CF8
7	STEM GUIDE	CF8
8	GASKET	ASBESTOS
9	BOLT	SS-41
10	SPRING KNOB	CF8
11	TOP SPRING	SUP-6
12	SPRING HOLDER	CF8
13	TOP	CAST IRON
14	POSITION NUT	BRASS
15	ADJUSTING SCREW	BRASS
16	TOP CAP	A356.2
17	DIAPHRAGM DISC	AIS-301



DIMENSIONS								Unit:mm
OUTLET PRESSURE ADJUSTABLE RANGE: 0.07-7KG/CM ²								
SIZE	Inch	1/2"	3/4"	1"	1 1/4"	1 1/2"	2"	
	mm	15	20	25	32	40	50	
L		95	95	95	130	130	160	
H1		55	55	55	72	72	90	
H2		185	185	180	205	205	260	