

KE-8222A & KE-8322A

FLOAT & THERMOSTATIC TYPE STEAM TRAP

MATERIAL: SS 304/ SS 316

SIZE: 1/2" , 3/4" & 1"

MOP: 30 kg/cm²

TEMPERATURE: 320°C

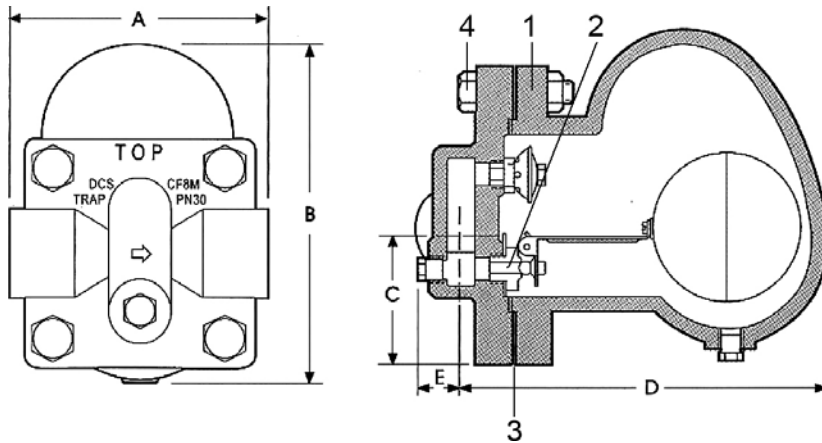
MAX. DISCHARGE CAPACITY: 1250 kg/hr



KE-8222A



KE-8322A



DIMENSIONS					Unit:mm
CONN.SE.*	A	B	C	D	E
15.20.25	125	155	58	155	22

MATERIAL LIST		
NO.	PART NAME	MATERIAL
1	CAP & BODY	CF8M, S.S. 316 / CF8 S.S. 304
2	INTERNALS	STAINLESS STEEL 304
3	GASKET	COMPRESSED NON-ASBESTOS
4	BOLTS & NUTS	STAINLESS STEEL 304

CONTINUOUS DISCHARGE CAPACITY OF CONDENSATION IN KG/HR							
MOP	2K	5K	9K	12.5K	17K	30K	
ORIFICE Ø	7.9	5.5	4.3	3.9	3.1	2.7	
0.25	650	370	270	170	180	120	
Δ P . GK/CM ²	0.5	775	460	370	260	140	
	1.0	960	610	475	320	165	
	1.5	1,125	700	540	370	200	
	2.0	1,250	790	600	405	240	
	3.0		925	700	475	430	
	4.0		1,030	800	535	480	
	5.0		1,110	890	585	500	
	7.0			1,000	690	570	
	9.0			1,075	780	610	
	10.0				820	660	
	12.5				920	680	
	17.0					700	
	20						530
	28						600
	30						620