

KE-8222CI & KE-8322CI

FLOAT & THERMOSTATIC TYPE STEAM TRAP

MATERIAL: ASTM A216 WCB

SIZE: 1/2" thru 2"

MOP: 17 kg/cm²

TEMPERATURE: 230°C

MAX. DISCHARGE CAPACITY: 11,000 kg/hr

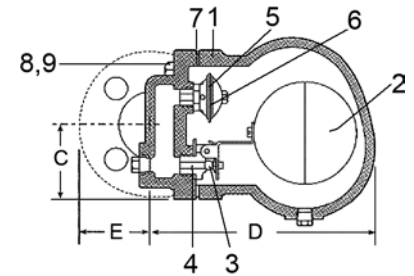


KE-8222CI

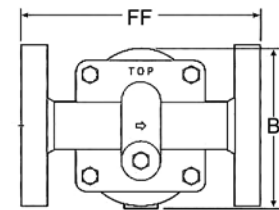


KE-8322CI

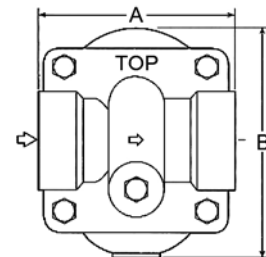
MATERIAL LIST		
NO.	PART NAME	MATERIAL
1	CAP & BODY	ASTM A216 WCB
2	FLOAT	STAINLESS STEEL 304
3	MECHANISM	STAINLESS STEEL 304
4	SEAT & VALVE	HARDENED STAINLESS STEEL
5	AIR VENT CAGE	STAINLESS STEEL 304
6	DIAPHRAGM OF AIR VENT	STAINLESS STEEL 304
7	GASKET	COMPRESSED NON-ASBESTOS
8	BOLTS	CARBON STEEL
9	NUTS	CARBON STEEL



DIMENSIONS (FLANGED ENDS) Unit:mm							
TRAP NO.	CONN. FE	FF	B	C	D	E	MOP
F2F	15.20.25	178	123	64	193	50	12.5
F5F	25.32	178	156	64	252	63	17
F6F	32.40	205	174	66	223	70	17
F8F	40.50	265	226	90	265	78	17
F08F	40.50	265	264	90	320	78	17



DIMENSIONS (SCREWED ENDS) Unit:mm							
TRAP NO.	CONN. FE	A	B	C	D	E	MOP
F2	15.20.25	106	123	64	180	22	12.5
F5	25.32	106	156	64	210	25	17
F6	32.40	152	174	66	223	37	17
F8	40.50	197	226	90	275	44	17
F08	40.50	197	264	90	330	44	17



CONTINUOUS DISCHARGE CAPACITY OF CONDENSATION IN KG/HR																															
TRAP NO.		F2, F2F					F5, F5F					TRAP NO.		F6, F6F					F8, F8F					F08, F08F							
MOP		2K	5K	9K	12.5K	2K	5K	9K	12.5K	17K	MOP		1K	2K	5K	9K	12.5K	17K	1K	2K	5K	9K	12.5K	17K	1K	2K	5K	9K	12.5K	17K	
ORIFICE Ø		6.3	4.3	3.1	2.7	7.9	5.5	10.3	3.9	3.1	ORIFICE Ø		12.7	9.5	7.1	6.3	5.5	4.7	19	14.2	9.5	8.7	7.9	6.3	27	19	14.2	12.7	11	9.5	
Δ P . KG/CM ²	0.25	500	250	165	50	650	370	270	170	180	Δ P . KG/CM ²	0.1	1350	1100	850	700	550	450	2450	1320	1000	850	750	510	4900	2650	2000	1700	1550	1090	
	0.5	625	330	135	100	775	460	370	260	250		0.3	1500	1300	950	750	600	500	3050	2270	1300	1100	950	800	7100	4550	2700	2150	1900	1590	
	1.0	760	425	270	160	960	610	475	320	285		0.5	1700	1500	1050	900	650	600	4375	2950	1650	1300	1150	950	8750	5900	3300	2640	2250	1900	
	1.5	900	500	320	210	1125	700	540	370	335		1.0	1900	1650	1150	950	800	680	5500	3650	2300	1700	11500	1350	11000	7300	4550	3545	2950	2730	
	2.0	1025	575	360	245	1250	790	600	405	375		2.0		2050	1450	1250	1000	850		4550	3050	2350	1950	1780		9100	6100	4780	3860	3550	
	3.0		690	415	310		925	700	475	430		3.0			1700	1400	1150	950			3550	3250	2500	2250			7100	6500	5000	4500	
	4.0		775	450	365		1030	800	535	480		5.0			2000	1750	1350	1150			4400	3510	3000	2500				8950	7040	5900	5000
	5.0		840	475	400		1110	890	585	500		7.0				2000	1600	1300					4200	3400	2850				8450	6830	5700
	7.0			540	450			1000	690	570		9.0					1650	1400					4800	4050	3250				9545	8120	6500
	9.0			590	490			1075	780	610		10.0					1700	1500						4300	3600					8630	7100
	10.0				500				820	660		12.0					1850	1600						4430	3900					8860	7950
	12.5				525				920	680		15.0						1800							4200						8400
	17.0									700		17.0						1900							4350						8600