

# KE-8222CS

## FLOAT & THERMOSTATIC TYPE STEAM TRAP

MATERIAL: ASTM A216 WCB

SIZE: 1/2" thru 4"

MOP: 30 kg/cm<sup>2</sup>

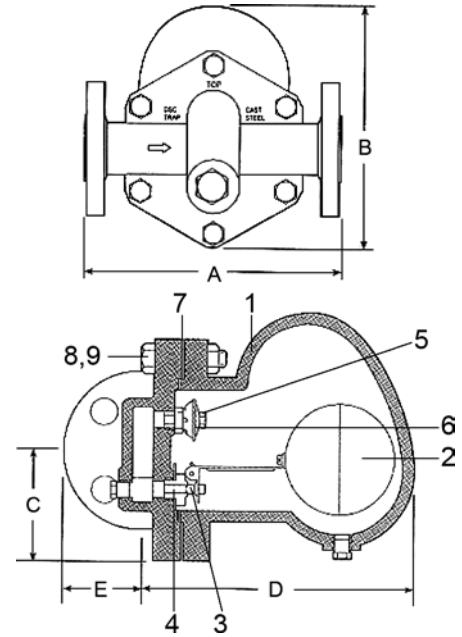
TEMPERATURE: 320°C

MAX. DISCHARGE CAPACITY: 112,500 kg/hr



MATERIAL LIST		
NO.	PART NAME	MATERIAL
1	CAP & BODY	ASTM A216. WCB
2	FLOAT	STAINLESS STEEL 304
3	MECHANISM	STAINLESS STEEL 304
4	SEAT & VALVE	HARDENED STAINLESS STEEL 304
5	AIR VENT CAGE	STAINLESS STEEL 304
6	DIAPHRAGM OF AIR VENT	STAINLESS STEEL 304
7	GASKET	COMPRESSED NON-ASBESTOS
8	BOLTS	ASTM A193 GR. B7
9	NUTS	ASTM A194 GR. 2H

DIMENSIONS							Unit:mm
TRAP NO.	CONN. FE	A	B	C	D	E	MOP
FS2	15.20.25	215	150	75	190	48	17
FS5	15.20.25	215	169	75	250	62	30
FS6	40	284	191	83	220	65	30
FS8	40.50	310	273	119	280	83	30
FS08	50	310	310	120	416	83	30
FS10	65	387	508	287	658	105	30
FS12	80.100	387	508	287	658	105	30



CONTINUOUS DISCHARGE CAPACITY OF CONDENSATION IN KG/HR																											
TRAP NO.	FS2										FS5					TRAP NO.	FS6					FS8					
MOP	2K	5K	9K	12.5K	17K	2K	5K	9K	12.5K	17K	30K	MOP	1K	2K	5K	9K	12.5K	17K	30K	1K	2K	5K	9K	12.5K	17K	30K	
ORIFICE Ø	6.3	4.3	3.1	2.7	2.2	7.9	5.5	4.3	3.9	3.1	2.7	ORIFICE Ø	12.7	9.5	7.1	6.3	5.5	4.7	3.9	19	14.2	9.5	8.7	7.9	6.3	5.5	
Δ P .KG/CM <sup>2</sup>	0.25	500	250	165	50	35	650	370	270	170	180	120	0.1	1350	1100	850	700	550	450	250	2450	1320	1000	850	750	510	360
	0.5	625	330	235	100	70	775	460	370	260	250	140	0.3	1500	1300	950	750	600	500	300	3050	2270	1300	1100	950	800	450
	1.0	760	425	270	160	100	960	610	475	320	285	165	0.5	1700	1500	1050	900	650	600	380	4375	2950	1650	1300	1150	950	510
	1.5	900	500	320	210	140	1125	700	540	370	335	200	1.0	1900	1650	1150	950	800	680	500	5500	3650	2300	1700	1500	1350	750
	2.0	1025	575	360	245	170	1250	790	600	405	375	240	2.0	2050	1450	1250	1000	850	600	4550	3050	2350	1950	1780	1000		
	3.0	690	415	310	220		925	700	475	430	260		3.0	1700	1400	1150	950	680		4550	3050	2350	1950	1780	1000		
	4.0		775	450	365	250		1030	800	535	480	280		5.0		2000	1750	1350	1150	800		4400	3510	3000	2500	1550	
	5.0		840	470	400	280		1110	890	585	500	300		7.0			2000	1600	1300	920		4200	3400	2850	1700		
	7.0			540	450	315			1000	690	570	350		9.0				1650	1400	1000		4800	4050	3250	1890		
	9.0			590	490	340			1075	780	610	380		10.0				1700	1500	1050			4300	3600	2000		
	10.0				500	350				820	660	400		12.0				1850	1600	1100			4430	3900	2150		
	12.5				525	370				920	680	430		15.0					1800	1150				4200	2400		
	17.0					410					700	480		17.0					1900	1200				4350	2500		
	20											530		20						1380						2900	
	28											600		28						1500							3300
30											620		30						1600							3500	

CONTINUOUS DISCHARGE CAPACITY OF CONDENSATION IN KG/HR								
TRAP NO.	FS08							
MOP	1K	2K	5K	9K	12.5K	17K	26K	30K
ORIFICE Ø	27	19	14.2	12.7	11	9.5	8.7	7.9
Δ P .KG/CM <sup>2</sup>	0.1	4900	2650	2000	1700	1550	900	720
	0.3	7100	4550	2700	2150	1900	1140	900
	0.5	8750	5900	3300	2640	2250	1360	1050
	1.0	11000	7300	4550	3545	2950	1820	1550
	2.0		9100	6100	4780	3860	3550	1960
	3.0			7100	6500	5000	4500	2300
	5.0			8950	7040	5900	5000	3180
	7.0				8450	6830	5700	3400
	9.0				9545	8120	6500	3780
	10.0					8630	7100	4000
	12.5					8860	7950	4320
	15.0						8400	4800
	17.0						8600	5000
	20							5590
	22							5820
26							6590	
30							7100	