

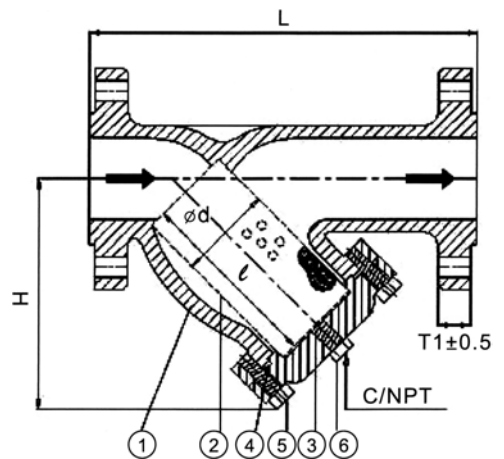
KE-8112

Y-TYPE STRAINERS, FLANGED ENDS

FLANGED ANSI 150LB / JIS 10K AND ANSI 300LB / JIS 20K
 MATERIAL: C.I. C.S. WCB AND S.S. 304/316
 SIZE: 1/2" THRU 20"



MATERIAL LIST							
NO.	PARTS NAME	MATERIAL					
1	BODY	A125 CLASS B	A216 WCB	A351 CF8	A351 CF8M	A351 CF3	A351 CF3M
2	SCREEN	SUS304	SUS304	SUS304	SUS316	SUS304L	SUS316L
3	COVER	A126	A216 WCB	A351 CF8	A351 CF8M	A351 CF3	A351 CF3M
4	GASKET	V#TVS	V#1500	PTFE	PTFE	PTFE	PTFE
5	BOLT	SS41	A193B7	SUS304	SUS316	SUS304	SUS316
6	DRAIN PLUG	FCM8	A105	SUS304	SUS316	SUS304	SUS316L
JIS 10K / ANSI 150LB							
	MAX.P KG/CM ²	10	16	16	16	16	16
	MAX. T°C	220	350	350	350	350	350
JIS 20K / ANSI 300LB							
	MAX.P KG/CM ²	20	30	30	30	30	30
	MAX. T°C	220	350	350	350	350	350



JIS 10K / ANSI 150		DIMENSIONS LIST																		Unit:mm
SIZE	Inch	1/2"	3/4"	1"	1-1/4"	1-1/2"	2"	2-1/2"	3"	4"	5"	6"	8"	10"	12"	14"	16"	18"	20"	
	mm	15	20	25	32	40	50	65	80	100	125	150	200	250	300	350	400	450	500	
L	160	160	190	220	220	250	284	300	355	410	453	610	765	887	965	1054	1150	1250		
H	100	100	110	145	145	170	190	200	260	315	380	430	530	690	680	720	885	960		
C	3/8"	1/2"	1/2"	1/2"	1/2"	3/4"	3/4"	3/4"	3/4"	3/4"	3/4"	1"	1"	2"	2"	2"	2"	2"		
T1	11.2	12.7	14.3	15.9	17.5	19.1	22.3	23.9	23.9	23.9	25.4	28.6	30.2	31.8	35.0	36.6	39.7	42.9		
ℓ	65	65	75	100	100	120	130	161	180	220	270	340	450	500	62.0	720	745	790		
L	23	23	30	46	46	56	74	88	110	140	160	210	270	320	370	420	480	535		
JIS 20K / ANSI 300																				
L	160	168	190	240	222	300	332	329	400	480	552	612	760	870	988	1090	1190	1290		
H	100	100	110	145	145	170	190	215	260	315	370	450	530	690	680	720	885	960		
C	3/8"	1/2"	1/2"	1/2"	1/2"	3/4"	3/4"	3/4"	3/4"	3/4"	3/4"	1"	1"	2"	2"	2"	2"	2"		
T1	14.3	15.1	17.5	19.1	20.7	22.3	25.4	28.6	31.8	35.0	36.6	41.3	47.7	50.8	54.0	57.2	60.4	63.5		
ℓ	65	65	75	100	100	120	130	150	180	220	265	330	420	500	620	720	745	790		
L	23	23	32	46	45	55	75	89	110	136	161	223	268	330	372	425	480	535		