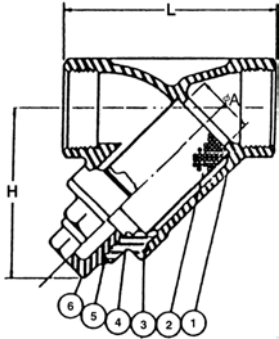


# KE-8210

## Y TYPE STRAINERS, SCREWED ENDS

MATERIAL: S.S. 316, INVESTMENT CASTING  
 SIZE: 1/2" thru 2"



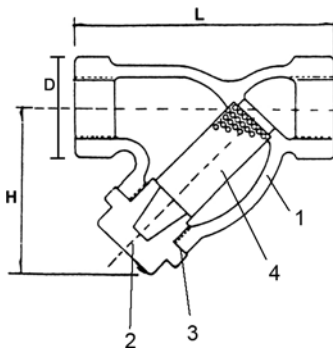
DIMENSIONS					Unit:mm
SIZE	A	B	H	L	
1/2"	15	26	51	65	
3/4"	20	33	60	80	
1"	25	41	72	90	
1 1/4"	32	49	77	105	
1 1/2"	40	56	87	120	
2"	50	69	103	140	

MATERIALS LIST			
NO.	PART NAME	Q'TY	MATERIAL
1	BODY	1	ASTM A-351 GR.CF8M
2	SCREEN	1	SS316 12 MESH
3	GASKET	1	TEFLON
4	BONNET	1	ASTM A-315 GR. CF8M
5	O-RING	1	VITON
6	BLOW OFF	1	ASTM A-351 GR. CF8M

# KE-8211

## Y TYPE STRAINERS, SCREWED ENDS

MATERIAL: C.I. FC-20, C.S. WCB.,  
 S.S.304/316, SAND CASTING  
 SIZE: 1/2" thru 3"



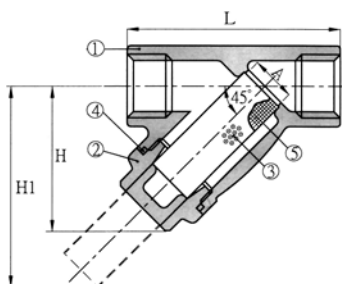
DIMENSIONS									Unit:mm
SIZE	1/2"	3/4"	1"	1 1/4"	1 1/2"	2"	2 1/2"	3"	
MM	15	20	25	32	40	50	65	80	
L	91	103	125	142	142	175	220	235	
H	65	75	90	110	110	125	155	180	
D	35	41	51	63	71	82	104	115	

MATERIALS LIST					
NO.	PART NAME	MATERIAL	WCB	SS 304	SS 316
1	BODY	FC-20	STEEL	304	316
2	COVER	FC-20	STEEL	304	316
3	PACKING	ASBESTOS	ASBESTOS	ASBESTOS	
4	SCREEN	AISI 304	304	304	316

# KE-8212

## Y TYPE STRAINERS, SCREWED ENDS

MATERIAL: CF8M, INVESTMENT CASTING  
 SIZE: 1/4" thru 2"  
 WORKING PRESSURE: 600(300) PSI



DIMENSIONS					Unit:mm
SIZE	A	L	H	H1	
1/4"	15	78	50	72	
3/8"	15	78	50	72	
1/2"	15	78	50	72	
3/4"	20	93	60	88	
1"	25	108	70	105	
1-1/4"	32	128	82	124	
1-1/2"	40	143	91	142	
2"	50	173	118	188	

MATERIALS LIST		
NO.	PART NAME	MATERIAL
1	BODY	CF8M
2	CAP	CF8M
3	SCREEN	316
4	GASKET	TEFLON
5	WIRE GAUSE	316